

PART - I

1. INTRODUCTION

The Lessons Learnt and Reconciliation Commission (LLRC) of 2011 recommended that **“a land use plan for each District in the North and East should be developed with the participation of district and national experts drawn from various relevant disciplines to guide the district administration in land conservation and alienation in order to ensure protection of environment and bio-diversity; sustainable economic development; leisure and recreational standards; religious, cultural and archeological sites with a view to improving the quality of life of the present and future generations”**.

The preparation of the plans was entrusted to the Land Use Policy Planning Department (LUPPD). The LUPPD started the planning process by establishing two expert groups, one at the National Level and the other at the District Level. Field work was commenced in 2013. Initially the available land use maps were updated to study the current patterns of land use and subsequently major land use issues were identified based on the field investigations. Recommendations to address the land use issues were formulated and these were presented to the Expert Groups and Stakeholders for their views and comments. The plan for the district has been prepared incorporating the views and comments of the Expert Groups and the Stakeholders.

The Plan is mainly divided into two parts. Part I provides the background for the plan. Part II gives the land use plan.

2. DISTRICT PROFILE

2.1 Introduction

Ampara District located in the South East of Sri Lanka belongs to the Eastern Province. It is bounded by the Polonnaruwa&Batticaloa Districts in the North, the Indian Ocean in the East, HambanthotaDistrictin the South and Monaragala, Badulla&MataleDistirctsin the West (Figure1). The total land area of the District is approximately 4495 square kilometers.

2.2 Administrative Structure

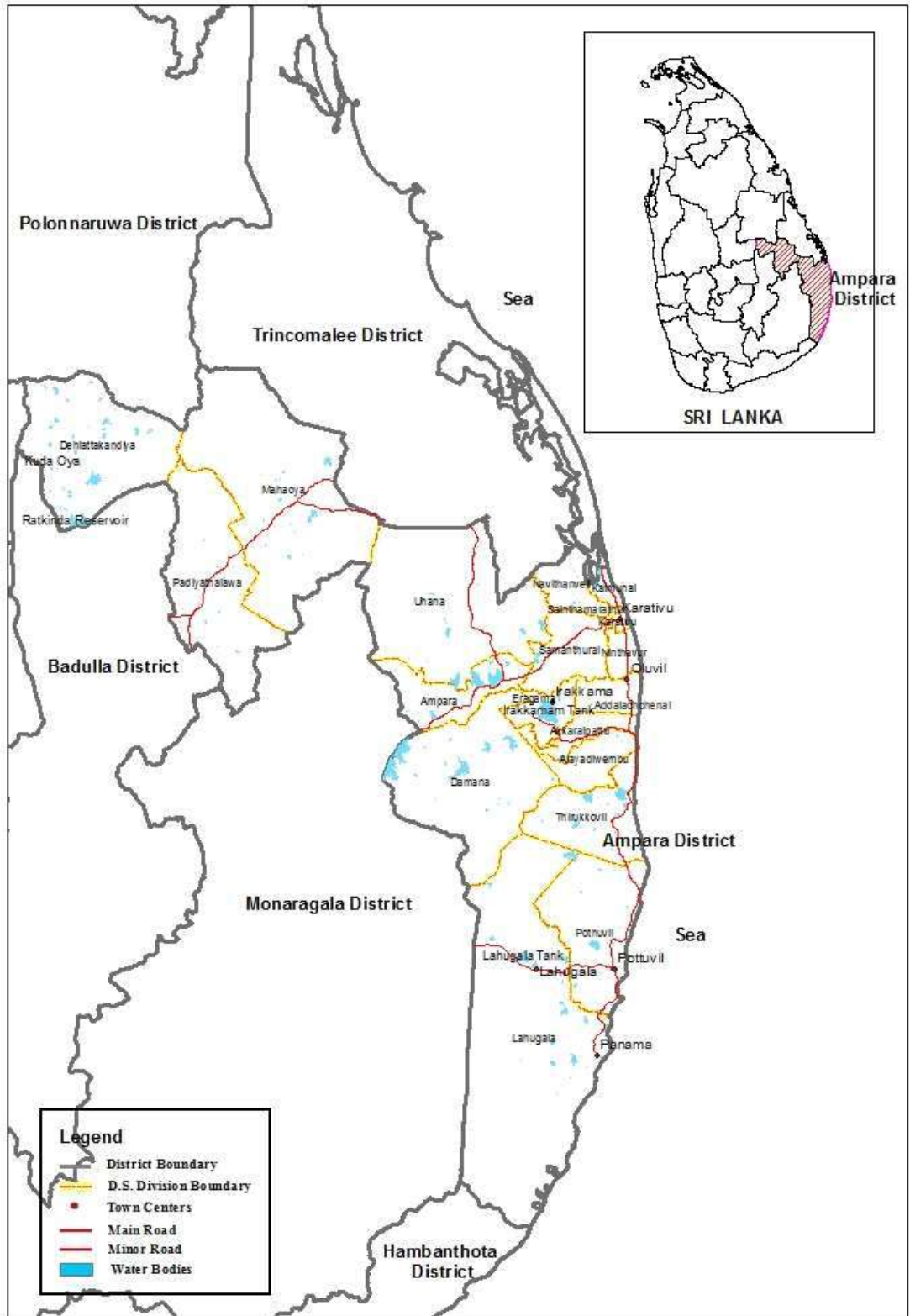
The district is subdivided into 20 Divisional Secretary Divisions (DSDs) (Figure 1 and Table 1). Each DSD is subdivided into several *Gram Niladari* Divisions (GNDs). The total number of GNDs is 503 (see Annex II). Each GND consists of several villages. There are 828 villages in the district. In addition to the above divisions there are several local authorities comprising two Municipal Councils in Kalmunai and Akkaraipaththu, an Urban Council in Ampara and seventeen *PradeshiayaSabas*.

Table 1: DS Divisions and their extents in Ampara District.

	DS Divisions	Number of GNDs	Extent (ha)
1	Addalachchenai	32	5696
2	Akkaraipattu	28	6041
3	Alayadiwembu	22	8259
4	Ampara	22	13927
5	Damana	33	44414
6	Dehiattakandiya	13	40131
7	Eragama	12	6665
8	Kalmunai*	58	1966
9	Karativu	17	894
10	Lahugala	12	92330
11	Mahaoya	17	68070
12	Navithanveli	20	6986
13	Ninthavur	25	3630
14	Padiyathalawa	20	38693
15	Pottuvil	27	27183
16	Sainthamarathu	17	303
17	Samanthurai	51	12301
18	Thirukkivil	22	18708
19	Uhana	55	53355
		503	449552

* Includes two divisions (Kalmunai Tamil Division and Kalmunai Muslim Division)

Figure 1 LOCATION AND ADMINISTRATIVE BOUNDARIES - AMPARA DISTRICT



2.3 Physical Environment

2.3.1 Topography

The topography of the district varies from flat to undulating. The elevation ranges from sea level to 500 m. There are also some erosional remnants that rise up to 700m.

2.3.2 Soils

The major soil types and their distribution in the District are shown in the Figure 2. The dominant soil group (approximately 38% of the total extent of land) in the district is the Reddish Brown Earth (RBE) with other soil groups as soil associations mainly in undulating terrain. The next dominant soil group is alluvial soils; it occupies about 16% of the total land area. Rest of the area of the district covers with Regosols, Solodized Solonetz & Solonchaks, Inselbergs and Rock Knob Plains. The physical and chemical properties of most of the RBE associations are generally suitable for agriculture. However, the major constraint to crop production in the district is the low available water rather than the limitations of the soils. The great soil groups and their approximate extents as a percentage of the total land area of the district are given in the Table 2.

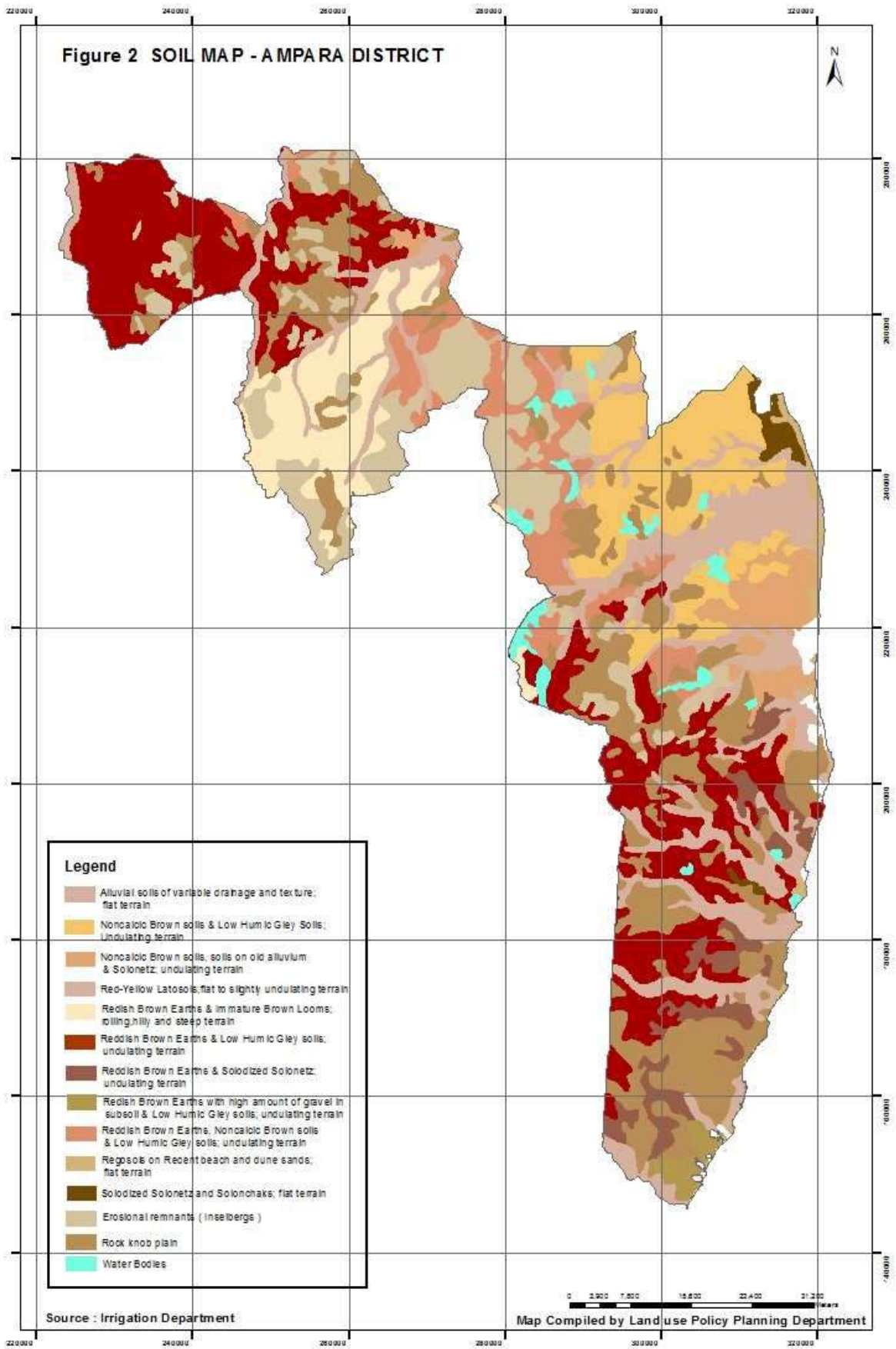


Table 2: The Great Soil Groups and their extents as a percentage of the total land area of the district.

Great soil group	Extent as a percentage (%)
Reddish Brown Earth & Low Humic Glay soils in undulating terrain	21
Reddish Brown Earth & Immature Brown Loamin rolling, hilly and steep terrain	06
Reddish Brown Earth & Solodized Solonetz in undulating terrain	04
Reddish Brown Earth with high amount of gravel in subsoil & Low Humic Glay soil in undulating terrain	01
Reddish Brown Earth, Non calcic Brown soil & Low Humic Glay soil in undulating terrain	06
Alluvial soil of variable drainage and texture in flat terrain	16
Non calcic Brown Soil & Low Humic Glay soil in undulating terrain	09
Non calcic Brown soil on old alluvium & Solonetz in undulating terrain.	04
Regosols on recent beach and dune sands in flat terrain	01
Other land units (Erosional Remnants, Rock Knob Plain)	31
Total	100

Source: Soil Map

2.3.3 Climate

Rainfall

Ampara district receives a mean annual rainfall of 1750 mm. Much of this rainfall is received between November and February during the

period of the North-East Monsoon (NEM). Most of the agricultural lands including paddy are cultivated during this season referred as “Maha” season. Some rain is also received during the first inter monsoon (FIM) period from March to early May.

Temperature

The mean annual temperature varies from 25⁰ C to 27⁰ C. The maximum temperature is recorded in March/April and the minimum temperature in November/January.

Agro-Ecology

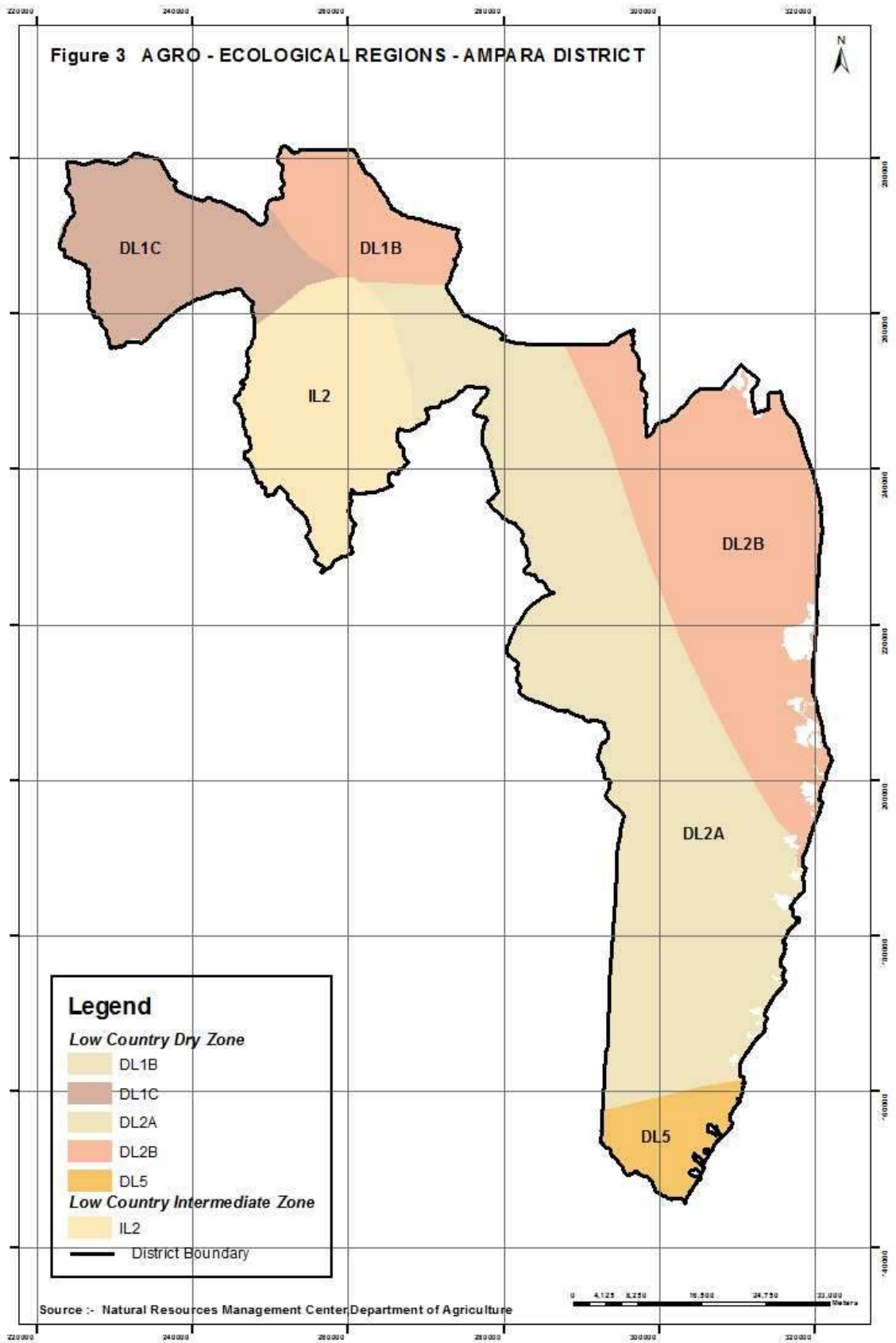
Based on a combination of the characteristics of climate, soil and relief the district has been subdivided into a number of agro-ecological regions. The two major agro-ecological regions in the district are Low Country Dry Zone (DL) and Low Country Intermediate Zone (IL). DL region is covering an area of approximately 80% of the district sub divided into five sub regions. These sub regions are DL1b, DL1c, DL2a, DL2b, and DL5. The Low Country Intermediate Zone in the district is categorized as IL2.

DL1 region receives comparatively higher amount of rains from NEM over an extended period of time. DL2 region is characteristically having unimodal pattern of rainfall. The IL region is wetter than DL regions.

The agro-ecological regions and their extents as a percentage of the total land area of the district are given in the Table 3 and the regions are shown in the Figure 3.

Table 3: Agro ecological regions and their extents (%) in the Ampara District

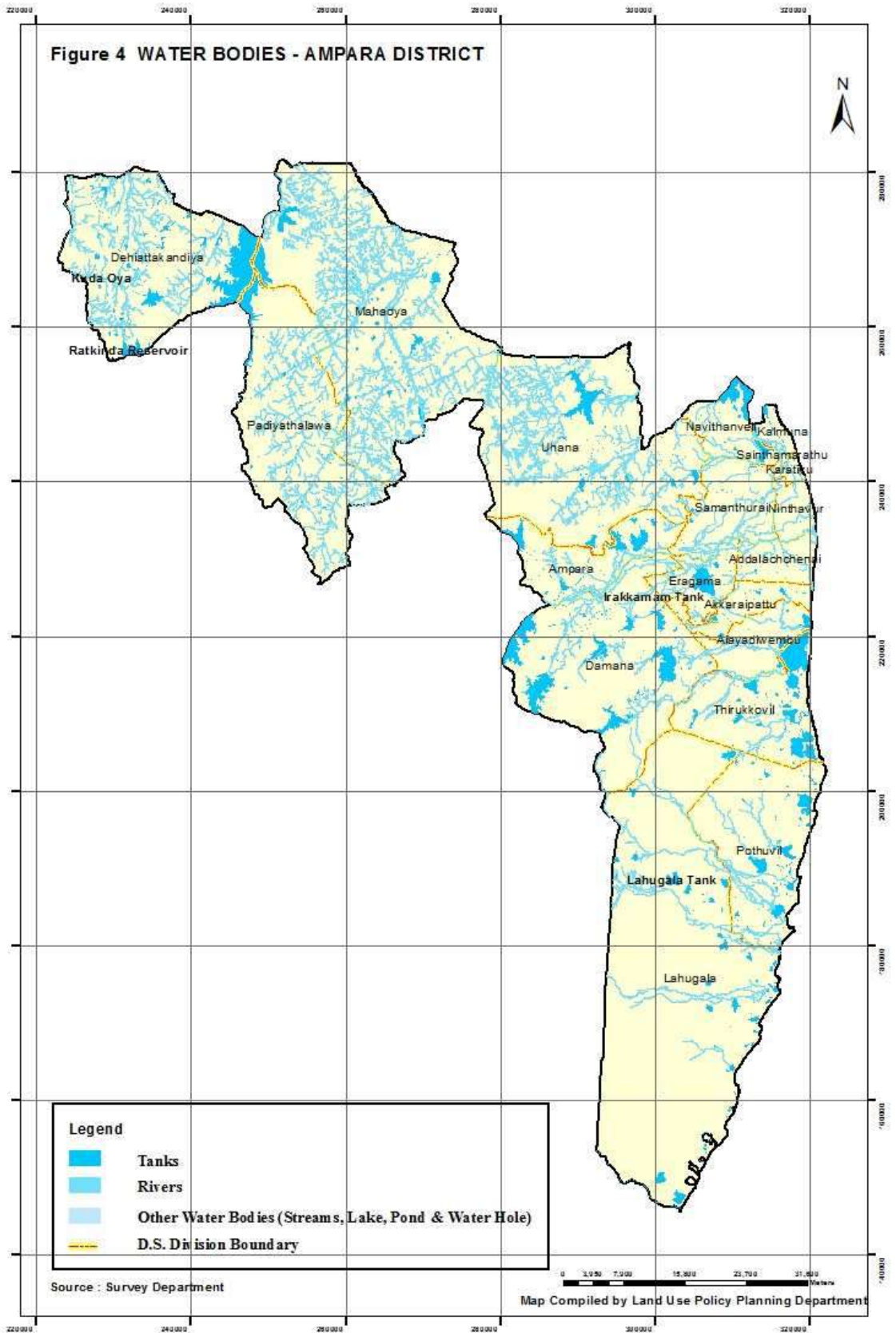
Agro-ecological region	Extent as a percentage (%) of the total land area
DL1b	10
DL1c	11
DL2a	34
DL2b	29
DL5	04
IL2	12
Total	100



2.3.4 Water

There are several water bodies including reservoirs, major and minor tanks, lagoons, rivers and streams in the District. Major water bodies are shown in the Figure 4. Some of the main rivers that flow across the district are MaduruOya, MangalaWatawanAru, Gal Oya, HadaOya and KangikadichchiAru. SenanayakaSamudrayathe largest reservoiris located in Monaragala district and its command area is in Ampara district.It supplies water to paddy, sugarcane and field crop cultivation. In addition, it also generates electricity.

Figure 4 WATER BODIES - AMPARA DISTRICT



2.4 Demographic structure

2.4.1 Population

The total population of the district in 2012 was 649,402 of which 314,352 are males and 335,050 are females¹. The lowest population density (i.e. below 150 people per sq.km) is recorded in Mahaoya, Padiyathalawa and Lahugala D.S. Divisions while highest density (i.e. more than 4000 people per sq.km) is recorded in Sainthamaruthu and Kalmunai D.S. Divisions (Figure 5). In the year 2015 midyear population estimate was made. According to the estimate there were 328,000 males and 349,000 females.

The composition of population according to religion and ethnic groups are given in Tables 4 and 5.

Table 4: Population by religion and sex

Sex	Buddhist	%	Hindu	%	Islam	%	Roman Catholic	%	Other Christian	%	Other	Total
Male	124,779	40	48,506	15	134,924	43	3,573	1.1	2,559	0.8	11	314,352
Female	126,648	38	54,323	16	147,063	44	4,015	1.1	2,998	0.8	19	335,050
Total	251,427		102,829		281,987		7,588		5,541		30	649,402

Source: Census Report, 2012

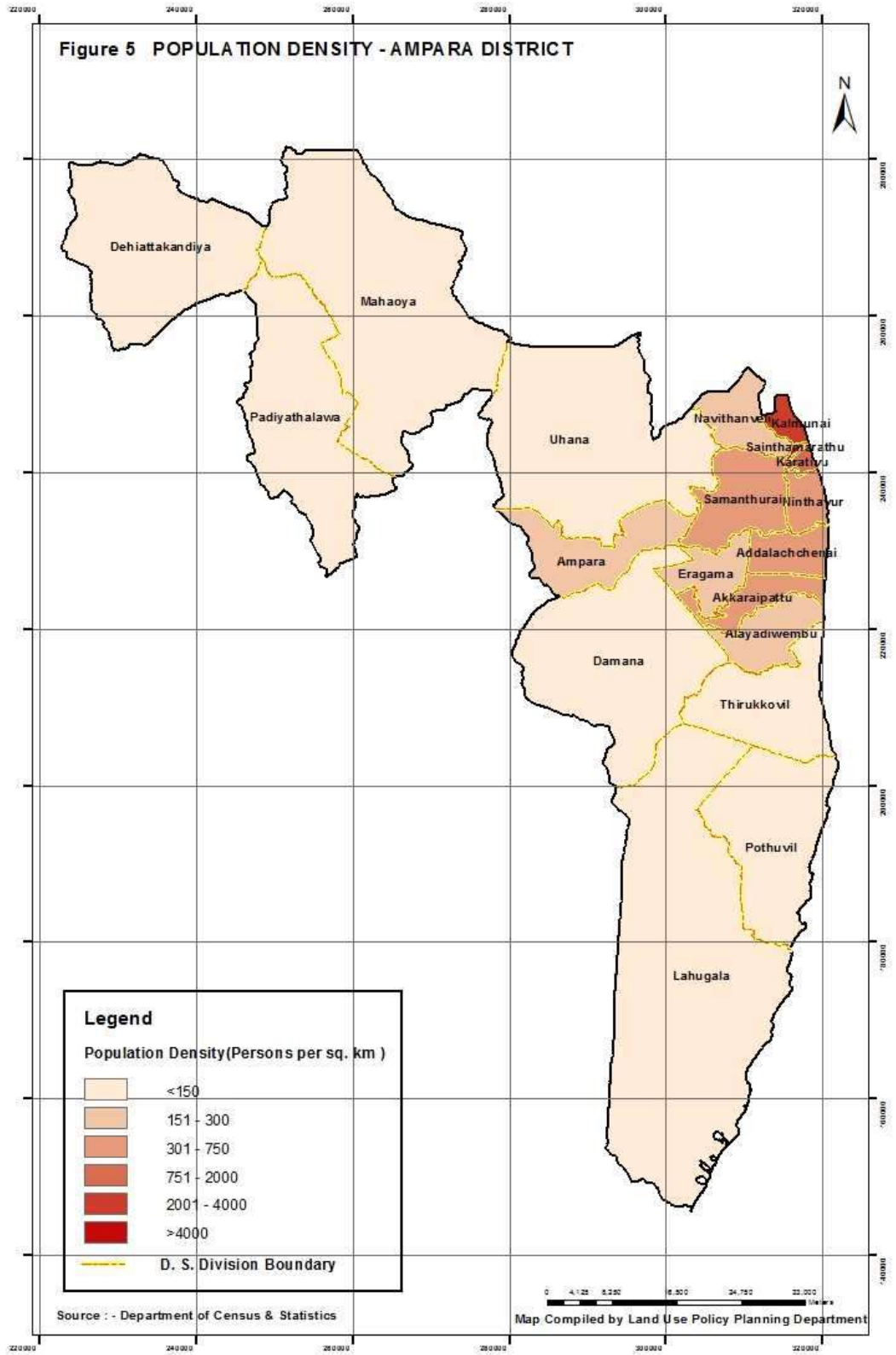
Table 5: Population by ethnic group and sex

Sex	Sinhalese	Sri Lankan Tamil	Indian Tamil	Sri Lanka Moor	Burgher	Malay	Sri Lanka Chetty	Other
Male	125,243	53,009	324	134,832	489	89	5	361

¹Census Report, 2012. Census and Statistical Department.

Female	127,215	59,448	522	146,870	547	98	-	350
Total	252,458	112,457	846	281,702	1,036	187	5	711

Source: Census Report, 2012



2.4.2 Labour Force

All persons age 15 years and above of either gender are identified as the working age population by the Department of Census and Statistics (DCS). This population comprising 4,50,137 persons consists of two groups namely “economically active” and “economically inactive”. The economically active population also referred to as the labour force comprises all persons of working age either “employed” or “unemployed” during the reference period. Economically inactive group includes persons who were neither working nor available or looking for work. They are classified as “not in the labour force” because they include full time engaged in household work; full – time students; retired; old age; infirmed; disabled; or not interested in working for one reason or another.

The economically active population comprises 74.6% males and 25.4% females².

2.4.3 Occupational Structure

The majority of the population (47.8%) is engaged in the service sector. The agricultural sector comprises 33.3% and the industry sector 18.8%. Percentage distribution of employed population by employment status is given in Table 6.

Table 6. Percentage distribution of employed population by employment status in Ampara district – 2014

Employee	Employer	Own Account Worker	Contributing family worker
53.9	2.0	39.4	4.7

Source: Census data

²Annual Bulletin, 2014. Department of Census and Statistics.

Unemployment rate in the district is 6% and the underemployment rate is 2.2%. Informal employment rate is 70.4%. Informal sector employment in non-agricultural sector is 56.1%. In the agriculture and fisheries sector 76% of the population is belong to Market gardeners and crop growers sub group.

Percentage of population engaged in major occupational groups is given in the Table 7.

Table 7: Percentage of population engaged in major occupational groups

Legislators, Senior officials & managers	0.9
Professionals	5.9
Technicians and Associate Professionals	3.8
Clerks	3.0
Service workers and shop and market sales workers	7.8
Skilled agric. and fishery workers	35.5
Craft and related workers	8.5
Plant and machine operators and assemblers	4.2
Private business owners	6.0
Elementary occupations	19.1
Armed forces and workers reporting occupations unidentifiable or inadequate	5.3

Source: Census data

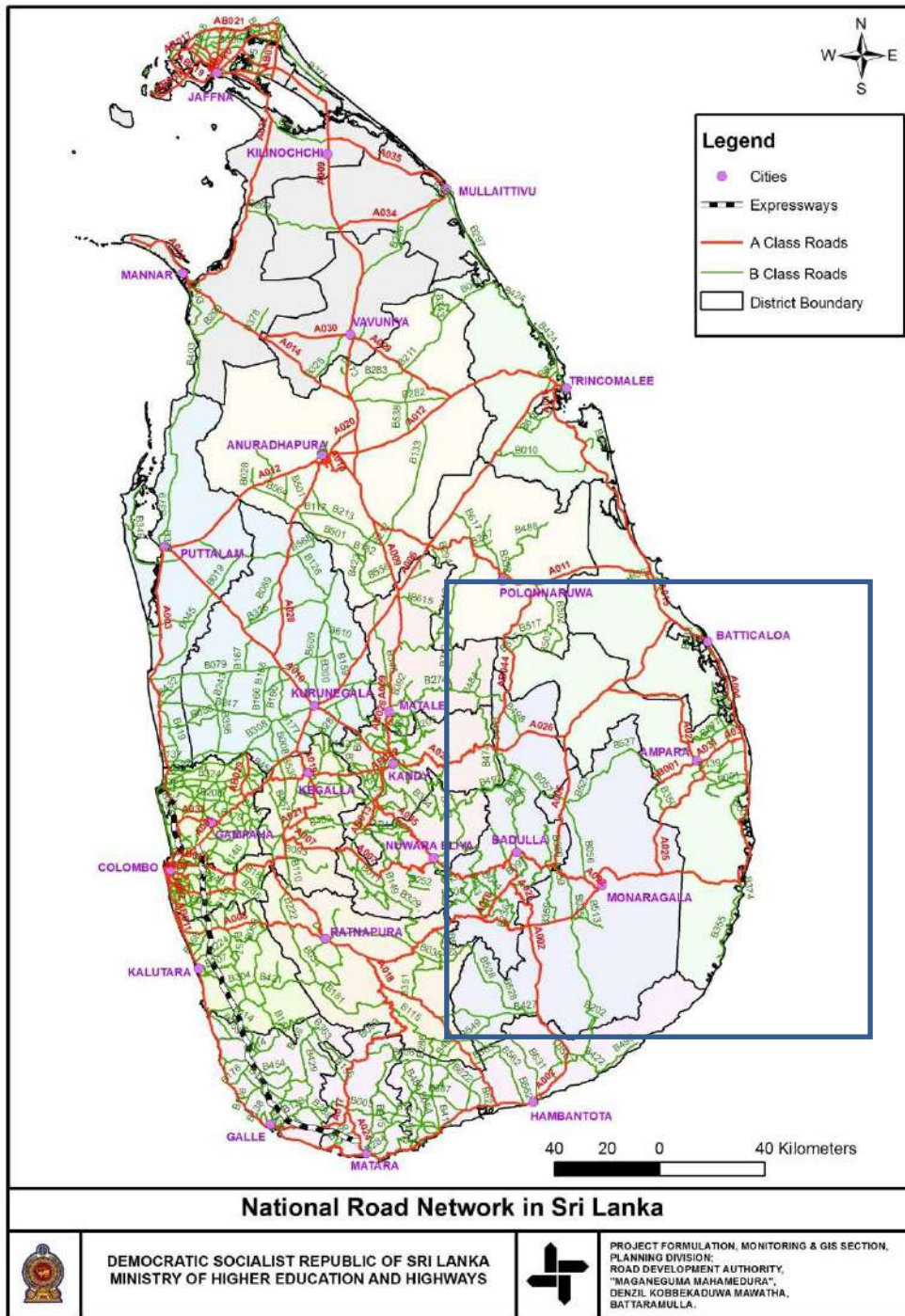
2.5 Infrastructure

2.5.1 Roads

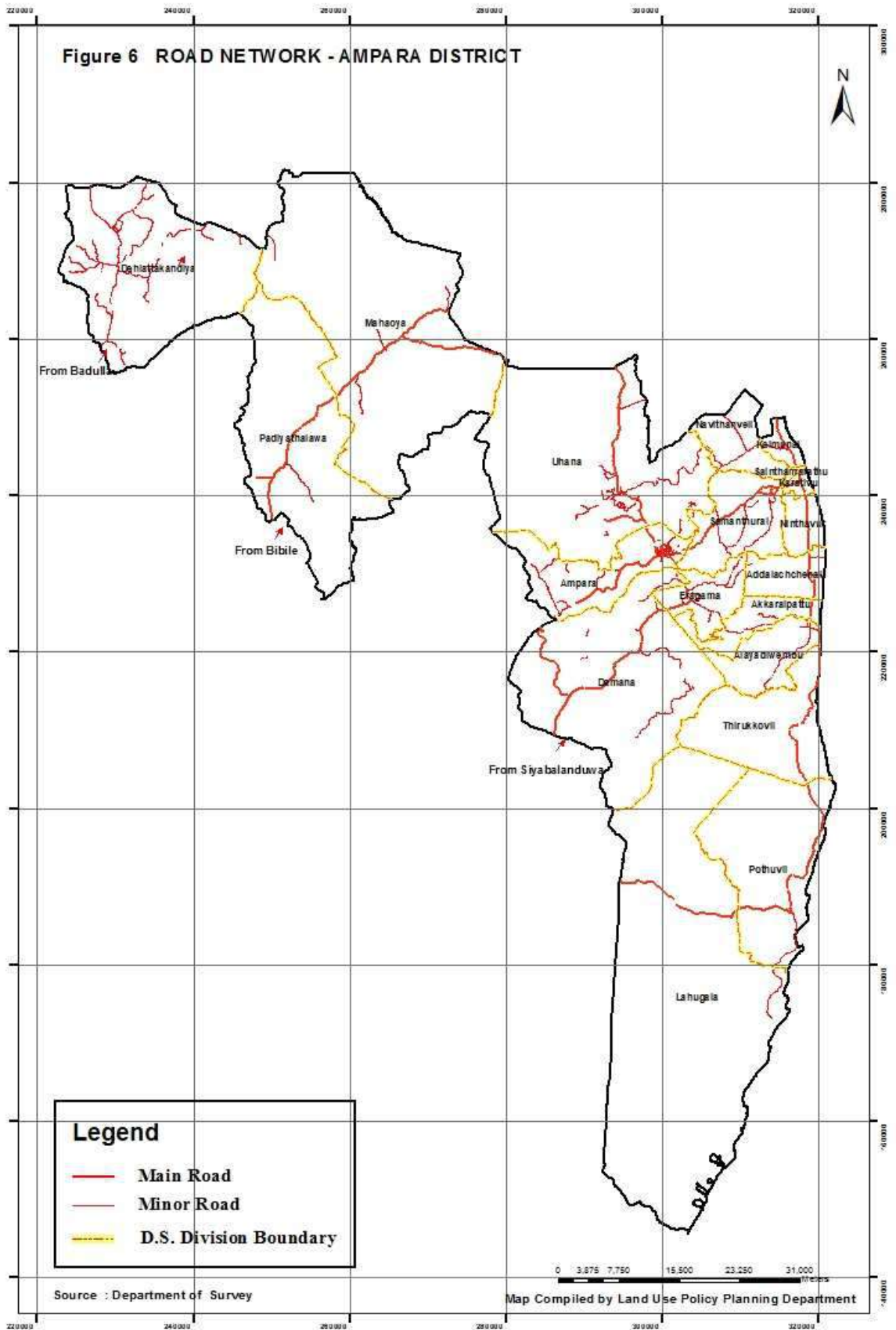
The figure 6 shows the road network of the district. It shows the distribution of Major and Minor roads in the District. However, the roads have been classified mainly as A, B and C by the Road Development Authority (RDA). The figure shown below obtained from website of RDA that indicates the distribution of roads belongs to classes A and B. The total length of A-class roads in the district is 273 km and B class roads are 282 km. There are road classes named as AA and AB in the district. Some of the AA roads are Siyabalanduwa-Damana-Ampara, Ampara-Uhana-

Mahaoya and Karathivu-Ampara. The road from Ampara to Inginiyagala belongs to AB class.

Even though the main urban centers are adequately connected to other urban centers of the country through the existing road network, inter regional mobility between the Ampara district and other regions are comparatively at a low level. One of the reasons for poor mobility is that the district is further away from the other regions of the country due to geographic situation so as the access time from other regions are relatively higher. There is no railway line to connect the district to the rail network of the country.



Source: www.rda.gov.lk



2.5.2 Communication facilities

The communication facilities include fixed telephones and different mobile networks. Postal facilities are provided through the main and sub post office network in the district. Internet facilities provided by different service providers are also available.

Computer literacy rate is important for the efficient use of communication facilities in now a day. Computer literacy rate in Ampara district as a percentage of total population (age 5- 69 years) is 14.8 that ranked at the 18th among the other districts.

2.5.3 Sea and Air Ports

Oluvil Harbour

There is a commercial and fishery harbour located in Oluvil in Ampara district. This was opened in 2013. It covers a land area of 60 ha in the first stage and 105 ha in the second stage. The harbour basin covers an area of 16 ha of the sea and spreads 1.2 km along the coast line. Its depth is enough to handle ships up to 5,000 m.t. and fishery harbour has capacity to anchor more than 250 fishing boats

Ampara Air Port (Domestic)

Ampara Air Port also known as Gal-Oya Air Port is a domestic Air Port located in Ampara District. It was built in 1950s by the Gal Oya Development Board. It is also used as a military air base situated about 8.1 km North West of the town of Ampara.

2.6 Land Use

Major land uses and land cover in the district are forests, scrub, agriculture, home gardens and water bodies. Forest and scrub covers 34% and 12% of the total land area in the district respectively. Among the agricultural uses the

dominant use is paddy that covers about 22% of the total land area. Six percent (6%) of the total land area is covered by water bodies. More details of the land use are given in the Part II.

2.7 Existing Spatial Plans

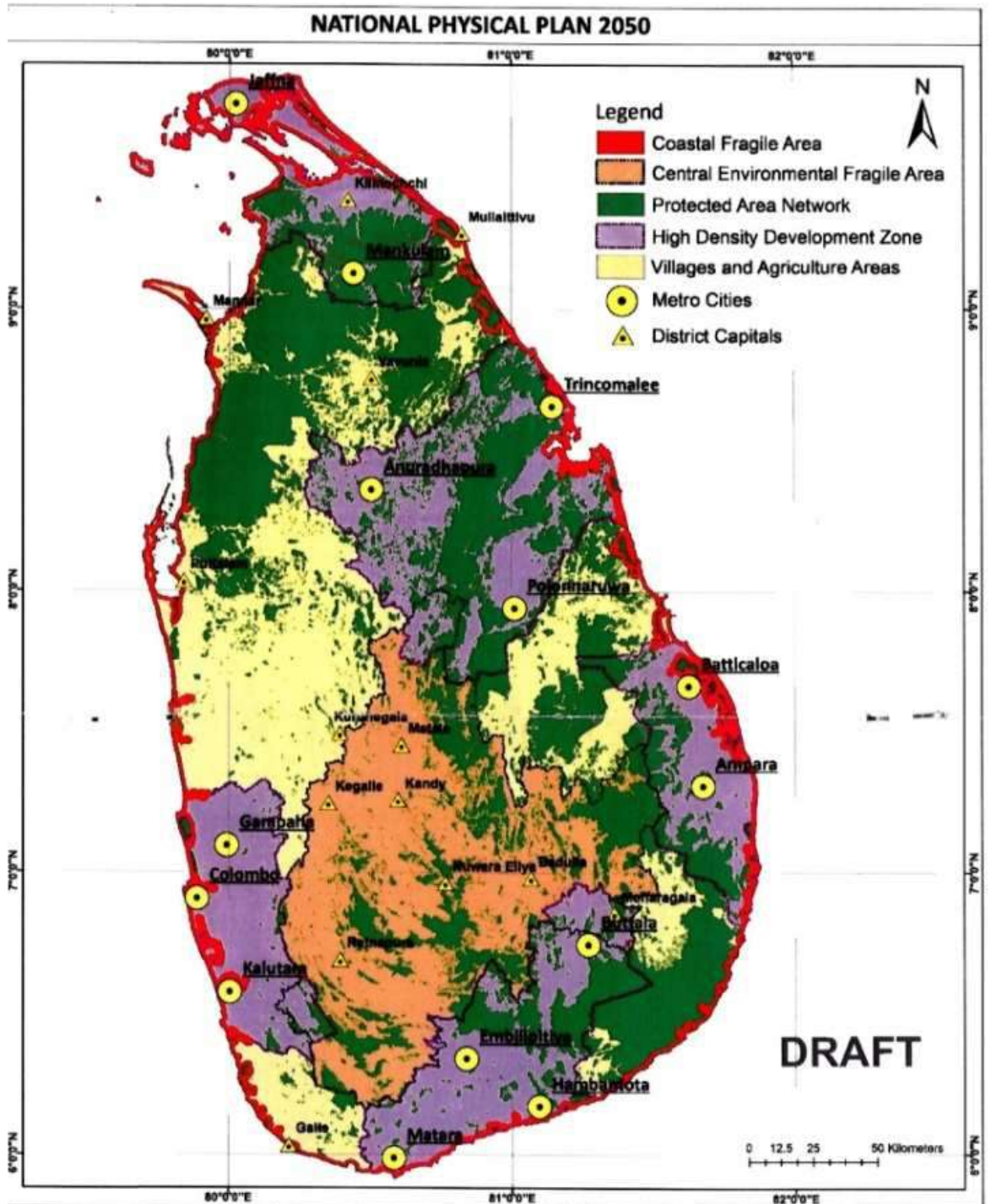
2.7.1 National Level Plans

The National Physical Plan prepared by the National Physical Planning Department (NPPD) provides a broad framework for the national development of the country. It is also the strategic document that outlines the vision of Sri Lanka in 2050³. Its role is to promote and regulate the integrated planning of economic, social, physical and environmental aspects of land and territorial waters of Sri Lanka. The main objectives of the National Physical Planning Policy and the Plan are to achieve economic development through the use of available resources of the country including agriculture, realizing a higher living standard for the people and the establishment of an independence economic status internationally⁴.

Major themes of the revised draft National Physical Plan – 2050 (shown below) are; (1) Fragile areas, (2) Protected Areas, (3) High density development zones, (4) Metro cities and (5) Village and service center networks (NPPD, 2015). Since it is a National Plan it does not adequately address the land use issues at the grass root levels.

³Anon, 2015. National Physical Plan as the Framework for City of Tomorrow. World Cities Day 2015, Consultative Forum, NPPD, Ministry of Mega polis and Western Development.

⁴www.nppd.gov.lk



Source: Anon, 2015. National Physical Plan as the Framework for City of Tomorrow. World Cities Day 2015, Consultative Forum, NPPD, Ministry of Mega polis and Western Development

2.7.2 Regional and Sub Regional Level Plans

(1) Eastern Province Physical Plan was prepared by the Environment and Management Lanka (Private) Limited on behalf of the National Physical Planning Department. This plan examined all sectors in the province and recommended that a comprehensive land use plan to be developed along with land-use policy to facilitate development of land markets, efficient land-use (including irrigation) and management as well as administration giving priorities to development of land use plans at community, GN, district and provincial levels.

(2) Preparation of coastal development plans including sector specific plans were suggested under the North East Coastal Community Development Project in 2012 funded by Asian Development Bank. These plans were mainly considered the development of coastal area of the province.

(3) The Urban Development plans are being prepared by Urban Development Authority. "Urban Development Plan is a document which sets out the integrated development plan of a given urban area which has been formulated by the application of a rational criteria and methodology. It has two dimensions – a physical dimension concerned with the location and the layout of the area and an investment or funding dimension concerned with project implementation over time". Urban development plan for Ampara Urban council area was gazetted in 2010. The plans are being prepared for other urban areas in the District. However, these plans are confined to urban areas mainly focusing on the urban development by introducing urban zoning plans.

2.7.3 Need for a Land Use Plan

The existing National Level Plans do not address local land use issues in a detailed manner. Furthermore the present regional level plans primarily concerned with infrastructure development and issues in urbanized areas. Therefore, it is crucial to prepare district land use plans to promote better land use especially in the war affected areas. This need was also recognized by the LLRC. The LLRC recommended that district land use plans has to be prepared as a decision making tool to ensure the protection of environment and bio-diversity, sustainable economic development, maintain the leisure and recreational standards, protection of cultural and archeological sites with a view to improving the quality of life of the present and future generations.

PART - II

3. PLANNING APPROACH

Approaches to spatial planning vary considerably throughout the world, reflecting historical and cultural developments as well as geographical and economic conditions. There are four major approaches can be identified⁵. They are;

a) Regional economic planning approach

In this approach spatial planning is used as a policy tool to pursue wide social and economic objectives, especially in relation to disparities in wealth, employment and social conditions among different regions of the country⁶.

b) Comprehensive integrated approach

A comprehensive integrated approach, where spatial planning is conducted through a systematic and formal hierarchy of plans. In this approach plans at lower levels will not contradict with the planning decisions at higher levels.

c) Land use management approach

In this approach, planning is a more technical discipline in relation to the control of land use. The recommendations or regulations will ensure the sustainable development.

⁵EU Commission 1997. The EU Compendium of Spatial Planning Systems and Policies. Brussels: European Union, Office for Official Publications of the European Communities.
http://commin.org/upload/Glossaries/European_Glossary/EU_compendium_No_28_of_1997.pdf

⁶Williamson, I., S. Enemark, J. Wallace, A. Rajabifard. 2010. Managing the use of land. Land Administration for Sustainable Development. ESRI Press Academic, California.

d) Urbanism approach

In this approach key focus is on architectural and urban design through rigid zoning and land use codes and a wide range of laws and regulations.

In the preparation of District Land Use Plan, basically land use management approach was adopted using the guidelines developed for land use planning by Food and Agricultural Organization (FAO)⁷.

FAO has stated that Land use planning is the systematic assessment of land and water potential, alternatives for land use and economic and social conditions in order to select and adopt the best land-use options. Its purpose is to select and put into practice those land uses that will best meet the needs of the people while safeguarding resources for the future. The driving force in planning is the need for change, the need for improved management or the need for a quite different pattern of land use dictated changing circumstances.

FAO has indicated that several steps have to be followed in preparing a land use plan. The steps that are followed for the preparation of the plan are given below;

3.1 Study the present situation

The land use maps that were available have been prepared more than thirty years ago. In order to identify the changes that have taken place since then the existing land use maps were updated in 2015. Identification of land use issues was done simultaneously. Digital layers on the scale of 1:10,000 provided by the Survey Department were used as base maps. Entire district covers by 175 map sheets (Annex I). The new land use maps were prepared in two stages. In stage one existing land use maps were updated using recent satellite images. In stage two these maps prepared were subjected to field verification. The classification followed in preparing the land use map is given in the table 8.

⁷FAO, 1993. Guidelines for Land Use Planning. Food and Agricultural Organization of the United Nations. Rome.

3.2 identification of land use issues

Field investigations revealed that the land uses could be divided into two broad categories i.e. (i) areas where changes are not required and existing land uses can be continued, (ii) areas where the land use changes or land use improvements are desirable. Plan mainly focuses on the second category. Areas where the land use changes or improvements are desirable because there are several land use issues pertaining to major land uses. These land use issues were identified and mapped by visual observations and by consulting land users. Land use issues are briefed in the section 5.2. The issues provide the basis for the preparation of the land use plan.

3.3 Formulation and validation of recommendations to address the issues

The desirable land use changes or improvements that were identified were discussed with the divisional level stakeholders, District Level Expert Group (DEG) and the National Level Expert Group (NEG) (The composition of these expert groups is given in the annex III & IV). The recommendations for land use changes or improvements validated by the above groups.

3.4 Preparation of the land use plan

The land use plan was prepared based on the information and data gathered from the field and considering the views, comments and recommendations made by the divisional level stakeholders, DEG and NEG.

4. LAND USE/LAND COVER OF THE DISTRICT

4.1 Introduction

Details of the present land use and land cover of the district are briefed in this section. In addition past situation of some of the major land use categories are given for more information. Present land use map were used to identify the land use issues and used as a base for the land use plan.

4.2 Land Use/Land Cover

Land use of the district (2015) is shown in the figure 7 and approximate extents of different land use categories are given in the table 8. Approximately 32% of the total land area is covered by forest. Second dominant land use is paddy that covers about 21%.

Table 8. Land use categories and their approximate extents

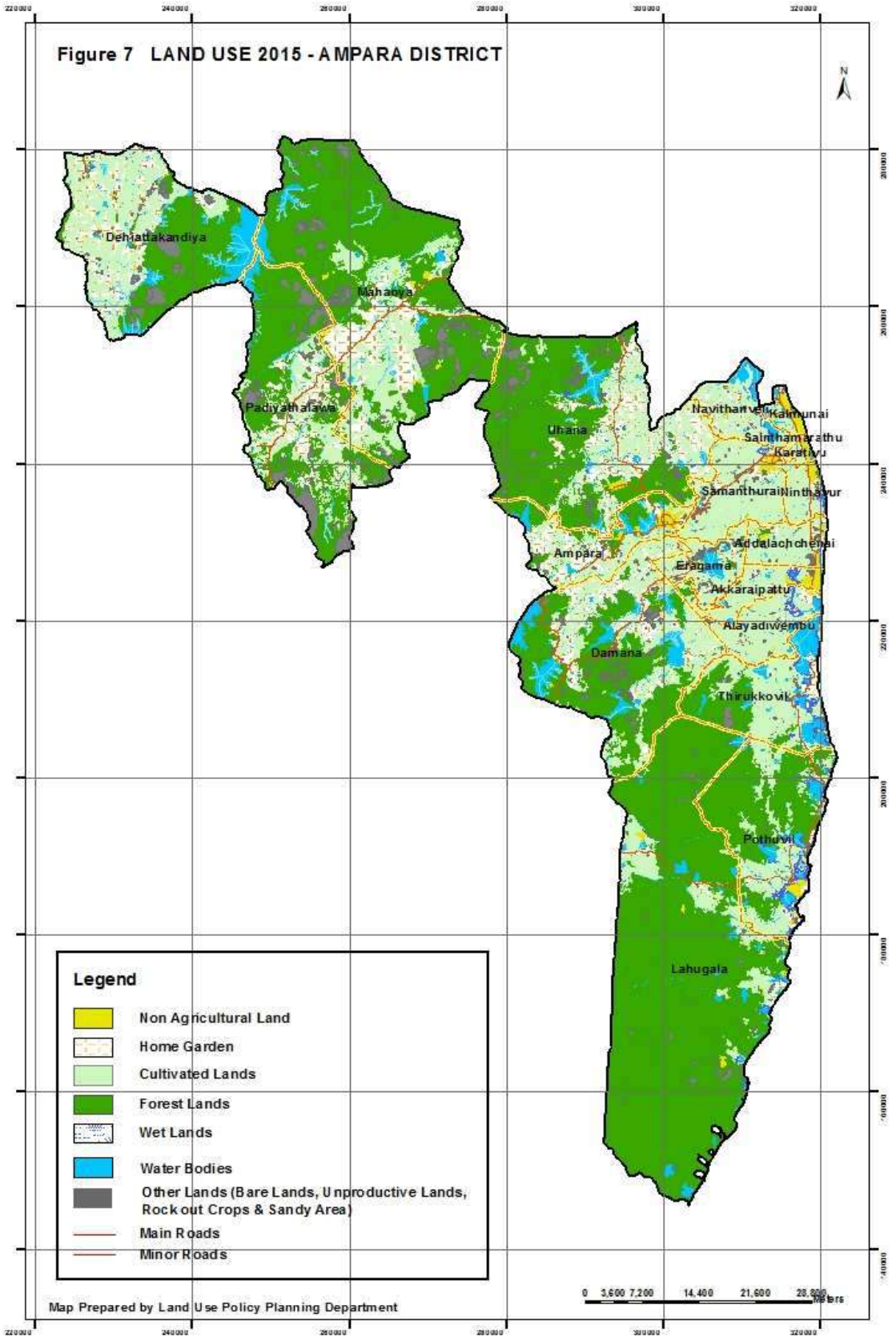
Main category	Sub category I	Sub category II	Approx. Extent (ha)	Percentage
Non-Agricultural lands	Service centers		1,025	0.2
	Industrial area		594	0.1
	Other		2,347	0.5
Home gardens			42,641	9.5
Agricultural Lands (Cultivated Lands)	Seasonal crops	Paddy	97,268	21.6
		Field crops	16,865	3.8
	Permanent crops	Coconut	1,162	0.3
		Cashew	411	0.1
		Sugar cane	6,570	1.5
		Rubber	880	0.2
		Other perennial crops	663	0.1
	Aquaculture		26	0.005
Forest	Natural Forest		144,080	32.1
	Forest Plantation		8,114	1.8
	Scrub Land		55,096	12.3
	Grass Land		19,715	4.4
Wet Lands	Marsh		2,058	0.5
	Mangrove		155	0.034
Other Lands	Vacant lands		3,346	0.7

	Unproductive lands	128	0.028
	Rock out crops	16,237	3.6
	Sandy area (beaches, sand dunes etc.)	1,590	0.4
Water bodies	Lagoon	5,502	1.2
	Tanks(major & minor tanks, natural ponds)	18,668	4.2
	Rivers and streams	4399	1.0
Total		449,540	100

Source: Updated Land Use Map

Land Use in the district in the year 1981 according to the maps prepared by Survey Department showed that forest cover including both dense and open forest categories was about 35% of the total land area of the district. Homesteads were about 4% and paddy area was 12% of the total land area. However, these extents are difficult to compare with the present extents due to their scale differences.

Figure 7 LAND USE 2015 - AMPARA DISTRICT



5. PROPOSED LAND USE PLAN

5.1 Introduction

Proposed land use plan has two broad categories i.e. (i) areas where changes are not required and existing land uses can be continued because of these areas do not have major land use issues, (ii) areas where the changes or improvements are desirable. The proposed land use plan indicates the changes or improvements that are desirable. The major categories of the proposed plan are given below;

Areas where the present use can be continued

- Presently protected/conserved areas
- Other areas where there are no major land use issues (Home gardens, Agricultural Areas, Built-up areas etc.)

Areas where changes or improvements are required

Additional areas recommended for protection

Unutilized lands (Proposed areas for future development)

- Suitable lands for housing
- Suitable lands for agriculture
- Suitable lands for expansion of service areas
- Suitable lands for tourism

Abandoned Paddy Lands

- Proposed for re-cultivation of paddy/appropriate uses

Abandoned settlements

- Proposed for resettlements

Underutilized Lands (where land use improvements are needed)

- Home garden
- Paddy
- Field crops
- Plantation crops

All abandoned lands shown in the proposed plan cannot be changed to previous use due to several reasons associated with these lands. These reasons may either be economic or social or environmental. However, some of the abandoned lands can be used to establish the previous use. The possible recommendations for the abandoned lands are given in Table 16.

5.2. MAJOR LAND USE ISSUES

Number of land use issues mainly related to the protection of the environment and land productivity can be identified in the district.

Six major land use issues were identified. These issues are given below;

a) Presence of “additional areas that need to be protected”

Some areas in the district are protected by gazette notifications. The protected area network includes Forest, Wild life reserves and corridors, other state forest lands, Grass Lands, Archeologically and Historically significant places, Areas of natural beauty and natural features of exceptional value, Water bodies/Wet lands, Coastal Natural Habitats and Urban Forests/Urban Parks. However, there are areas or sites that are not presently protected in the district. They have to be protected in order to conserve the bio-diversity, environment and ensure the protection of the religious, cultural and archeological sites.

Therefore, presence of additional areas that needs to be protected is considered as one of the land use issues.

b) Presence of low productivity agricultural lands

Low productivity agricultural lands (underutilized lands) include areas given over to highland crops (plantation crops and field crops) and paddy. Underutilized lands devoted to plantation crops include (1) crop lands where the proportion of land used is 70% or less, (2) croplands where intercropping is not practiced, (3) croplands where animal husbandry is not practiced though this is possible and (4) croplands where yield is below the average yield recommended by the research institutions and other relevant agencies. Underutilized lands devoted to field crops include (1) crop land where the proportion of land used is 70% or less and (2) cropland where yield is below the average yield recommended by the research institutions and other relevant agencies.



Photograph 1: Low productivity paddy lands in the district.

Low productivity paddy lands are categorized as (1) Lands where the yield per hectare is below the average of the district, (2) Lands that are cultivated only during one season.

c) Presence of low productivity home gardens

A home garden is the cultivated area surrounding the dwelling. The size of the home garden could vary from area to area and production is often for domestic consumption. The low productivity home gardens (underutilized) were identified using two criteria. (1) Home gardens where the proportion of land being used was 50% or less and (2) Home gardens where the Animal Husbandry is not practiced though this is possible.

d) Presence of abandoned settlements

There are settlements that were abandoned due to conflicts. These areas were identified and mapped.



Pohotograph 2: Abandoned settlement

e) Presence of abandoned agricultural areas.

These lands were classified according to the previous use. This category includes both paddy and high land crops. However, in the district under the abandoned agricultural lands category only paddy lands were identified. These lands were abandoned mainly due to sea water intrusion.



Photograph 3: Abandoned agricultural areas (Paddy Lands)

f) Presence of unutilized lands

These lands are idle state lands coming under the jurisdiction of different institutions.e.g. Land Reform Commission, Forest Department and other government institutions. However, utilizing these lands for future development activities depends on the decision taken by the respective managing agencies to release these lands.

The details of the above issues are presented with the recommendations in the section below



Photograph 4: Unutilized lands

5.3 Recommendations

Basically there are two areas were identified and presented in the plan (see Figure 17). They are;

- 1.Areas where the present use can be continued
2. Areas where changes or improvements are required

1. Areas where the present use can be continued

These lands include presently protected areas, productivehome gardens, productivecultivated lands, built-up areas etc. where land use changes or improvements are not required. Existing land use of these lands can be continued without major changes or improvements. The distribution of these lands among the Divisional Secretary Divisions is given below.

Table 9: Distribution of lands where changes/improvements arenot required.

D.S. Division	Lands where changes/improvements are not required*		
	Extent (ha)	Percentage (%) of the D.S.D	Percentage(%) of the District
Addalachchenai	4273	75	0.95
Akkaraipattu	5170	86	1.15
Alayadiwembu	3569	43	0.79
Ampara	8066	58	1.79
Damana	22223	50	4.94
Dehiattakandiya	25759	64	5.73
Eragama	5658	85	1.26
Kalmunai	1159	59	0.26
Karativu	734	82	0.16
Lahugala	4849	05	1.08
Mahaoya	23241	34	5.17
Navithanveli	5368	77	1.19

Ninthavur	3222	89	0.72
Padiyathalawa	23868	62	5.30
Pottuvil	5589	21	1.24
Sainthamarathu	263	87	0.06
Samanthurai	10954	89	2.44
Thirukkovil	6545	35	1.45
Uhana	28924	54	6.43
Total	189434		42.11

**excluding "Presently protected area".*



Photograph 5: Areas where the present use can be continued.

(a) Protected Areas

Basically two categories of protected areas were identified on the field. They are (1) Presently protected areas, (2) Additional areas recommended for protection. Presently protected areas are gazetted and managed by several agencies and the issues in these areas should be addressed by a "protected area management plan" prepared by the respective agencies. The distribution of the presently

protected areas is shown in Fig. 8. Approximate extents of the presently protected areas are given in the table 10. More information (managing agencies, present issues in the areas and recommendations) regarding the presently protected areas is given in the table 1 in the annex V.

Additional areas recommended for protection comes under second category where changes or improvements are required.

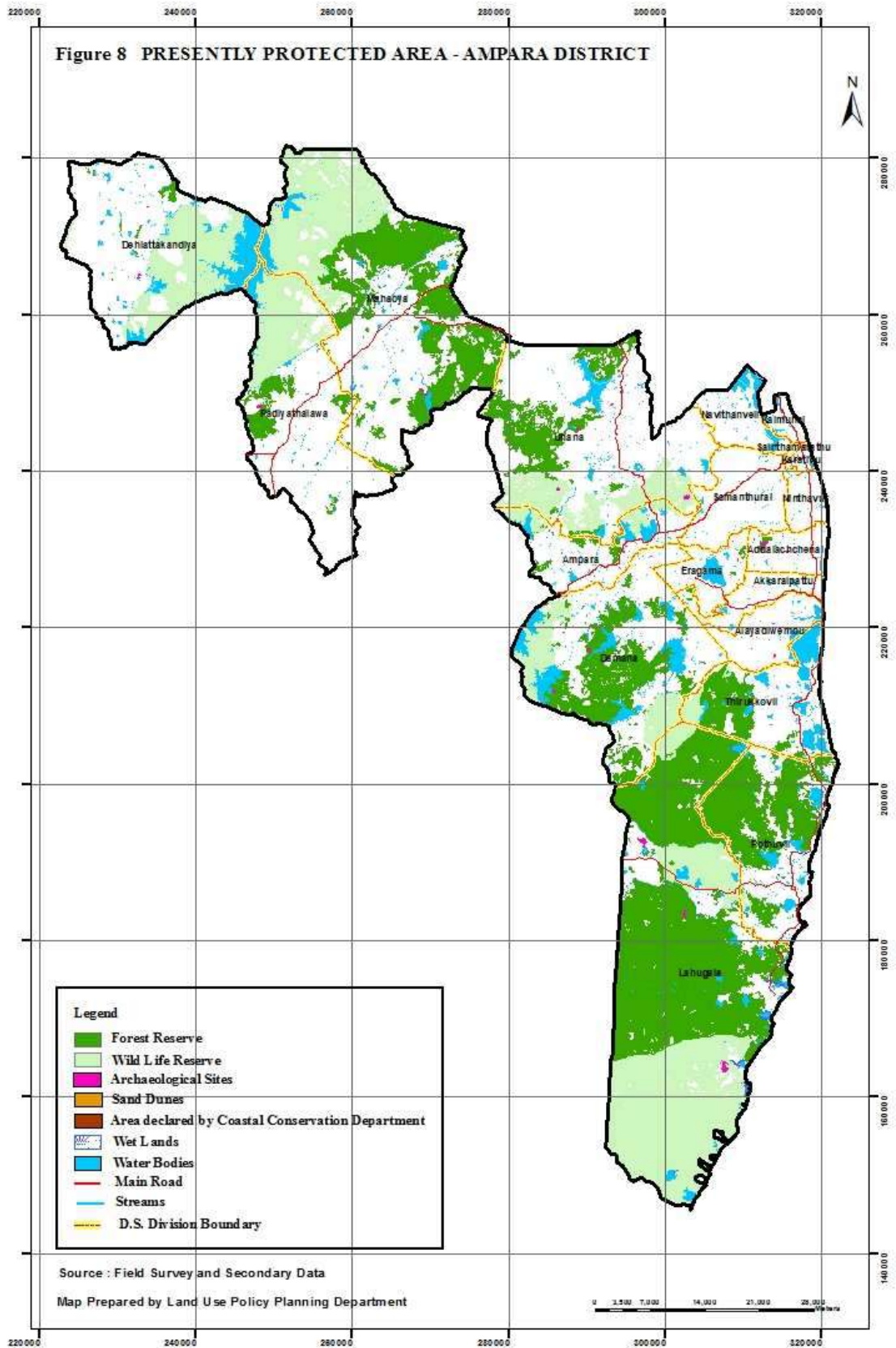
(b) Other areas/uses located outside of the protected areas that can be continued

There are some other areas located outside the protected area network where the uses of those areas can also be continued without any changes or improvements. Because minimum land use issues are available in these areas. These uses include productive home gardens, productive agricultural lands, service areas etc.. The percentage of the extent of these areas is 42% (excluding the presently protected area) of the total land area of the district. Rest of the areas needs some changes or improvements.

Table 10: Approximate extents of the presently protected areas in the district.

DS Division	Approximate Extents (ha)			
	Forest Reserves	Wild Life Reserves	Coastal Reserves	Archeological Reserves
Addalachchenai	123.4	n.a.	53.8	75.0
Akkaraipattu	100.6	n.a.	23.8	n.a.
Alayadiwembu	3.3	n.a.	14.4	5.5
Ampara	933.0	2353.0	n.a.	37.4
Damana	n.a.	n.a.	n.a.	76.4
Dehiaththakandiya	513.0	12003.0	n.a.	29.28
Eragama	128.8	n.a.	n.a.	10.0
Kalmunai	n.a.	n.a.	54.6	n.a.
Karathivu	3.56	n.a.	21.1	n.a.
Lahugala	47199.0	33178.0	383.4	224.7
Mahaoya	20646.0	n.a.	n.a.	76.0
Ninthavur	n.a.	n.a.	47.2	n.a.
Padiyathalawa	n.a.	n.a.	n.a.	15.66
Pdiyathalawa	2825.0	8067.0	n.a.	n.a.
Pothuvil	14444.0	257.0	183.6	7.3
Sainthamaruththu	n.a.	n.a.	2.5	n.a.
Sammanthurai	n.a.	50.8	n.a.	n.a.
Thirukkovil	4855.0	993.0	220.9	0.16
Uhana	n.a.	n.a.	n.a.	298.4
Total	91774.6	56901.8	1005.3	855.8

n.a. = not available



2. Areas where changes or improvements are required

(a) Additional areas recommended for protection

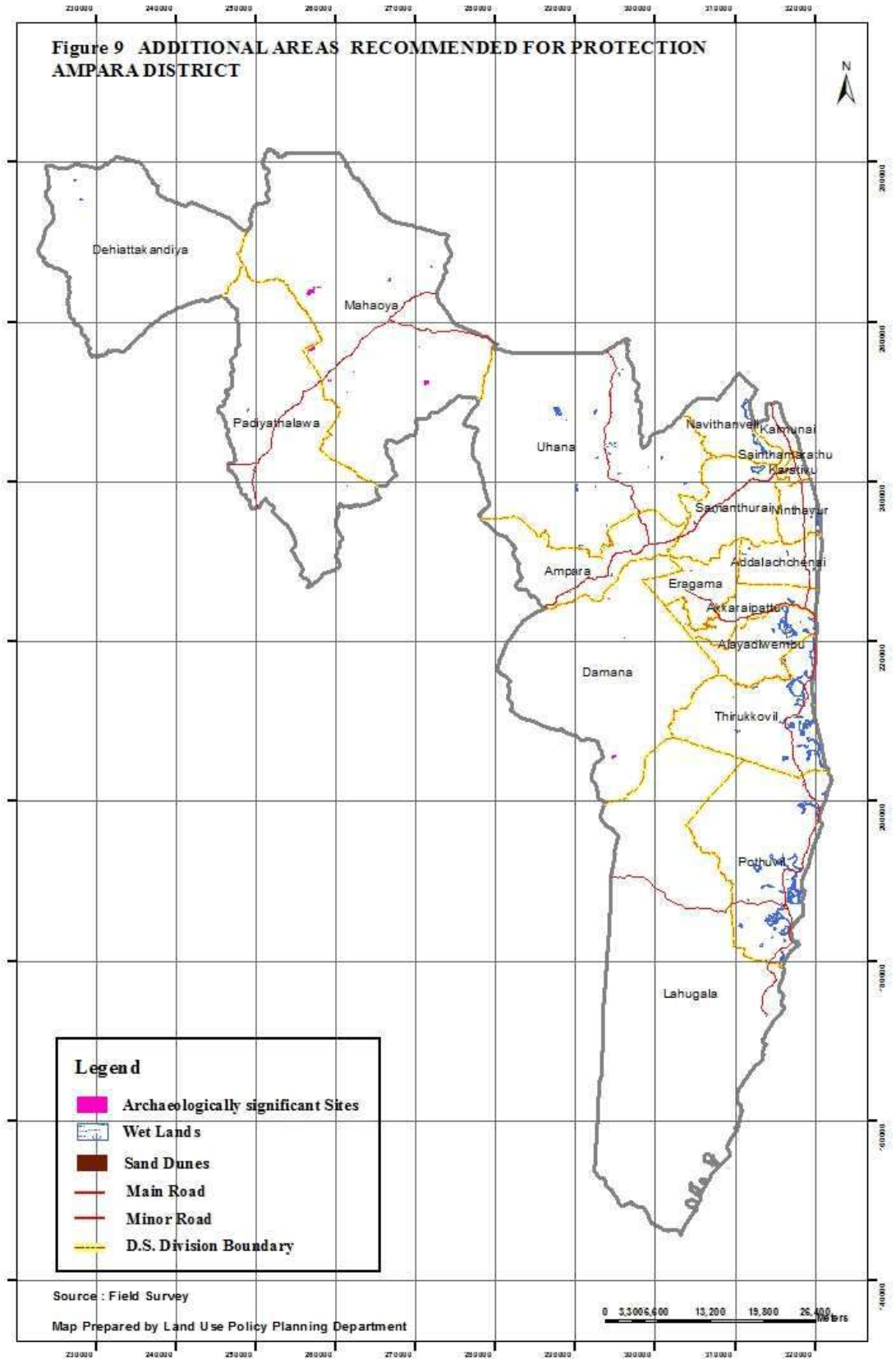
There are other areas besides the currently protected areas that need to be protected. These areas have to be protected to ensure the protection of religious, cultural, archeological sites and the protection of environment. The relevant institutions need to confirm the recommendations given in this plan. The approximate extents of the additional areas that need to be protected are given in the Table 11 and their locations are given in the Figure 9. Details are given in the Table 2 in the Annex V.

Table 11: Additional areas recommended for protection and their approximate extents in the district.

DS Division	Approximate Extents (ha)			
	Archeologically significant sites	Wet Lands	Sand dunes	Forest
Addalachchenai	n.a.	n.a.	n.a.	n.a.
Addalaichenai	n.a.	10.52	n.a.	n.a.
Akkaraipattu	n.a.	20.7	n.a.	n.a.
Alayadiwembu	n.a.	342.0	n.a.	n.a.
Ampara	0.7	1.7	n.a.	n.a.
Dehiattakandiya	n.a.	9.4	n.a.	n.a.
Kalmunai	1.0	0.3	n.a.	n.a.
Karathivu	n.a.	n.a.	n.a.	3.56
Lahugala	n.a.	n.a.	8.0	n.a.
Mahaoya	2.9	5.9	n.a.	n.a.
Navithanveli	n.a.	160.2	n.a.	n.a.
Ninthavur	n.a.	45.4	n.a.	n.a.
Padiyatalawa	2.6	1.4	n.a.	n.a.
Potuvil	1.8	720	n.a.	n.a.
Sammanthurai	8.0	n.a.	n.a.	n.a.
Thirukkovil	1.2	n.a.	n.a.	n.a.
Uhana	4.0	90.6	n.a.	n.a.
Total	22.2	1408.12	8.0	3.56

n.a.= not available

**Figure 9 ADDITIONAL AREAS RECOMMENDED FOR PROTECTION
AMPARA DISTRICT**



Source : Field Survey

Map Prepared by Land Use Policy Planning Department

0 3,300 6,600 13,200 19,800 26,400
Meters

(b) Underutilized Home gardens

The home gardens in the district include (1) properly utilized home gardens where no major changes are required and (2) underutilized home gardens where improvements are recommended.

There are several reasons why these home gardens are underutilized. The major reasons were;

- a) Lack of capital
- b) Inadequate Technical know-how
- c) Presence of degraded lands/areas (poor soil quality)
- d) Unreliable rainfall.
- e) Damage to crops from wild animals

In general, majority of the home gardens are underutilized due to one or more of the above reasons. The recommendations for the above issues are given below.

Table 12: Major reasons for underutilization of home gardens and proposed recommendations.

Major Reasons for underutilization	Recommendations
Lack of capital	-Awareness creation on agricultural loans or subsidy schemes
Inadequate Technical know-how	-Awareness creation and training
Presence of degraded lands/areas (poor soil quality)	-Introduction of conservation farming practices and provide necessary inputs
Unreliable rainfall.	-Carry out a study to explore the possibility of using ground water by constructing agro-wells. - Introduction of soil and water conservation technique. - Introduction of drought tolerant crops.
Damage to crops from wild animals	Establish a new electric fence or

extending the present fence

The extents of the home gardens are varying from one area to other. The areas where the high proportion of underutilized home gardens is available were identified and mapped. The divisions in which these home gardens are found and total extents are given in the Table 13 and their distribution are given in the Figure 10.

Table 13: Underutilized Home gardens and their total extents in the district

DS Division	GN Divisions	Total Extent (ha)
Addalachchenai	Addalaichenai 05,09, Deegawape 01,02, Oluvil 1,2,7, Palamunai 05,06	232
Akkaraipattu	Alim Nagar, Easankanichcheemai, Pallikudiyiruppu 01,02	167
Alayadiwembu	Alayadivembu, Aligambai, Kannakikiramam 01,02, Kolavil 02, 03, Navatkadu, Panankadu, SinnaPanankadu, Sinnamugathuwaram	187
Ampara	Ambagahawella, Ambamalthalawa, Dambethalawa, GemunupuraAMP, Indra sarapura, Karangawa, Kotavehera, Mihindupura, NamaOya 1 Usbima, NamaOya 2,3, Namalthalawa, Nawagampura, ParagahakeleEast, ParagahakeleWest, Samapura, Senanayak epura, Thissapura, WavinnaNorth, Wavinna South	2812
Damana	18AJanapadaya, Alahena, Damana, Dewalahida, Diviyagala, Eggaloya, Galkanda, Galmaduwa, Helagampura, Hindakalugama, Hingurana, Kalugolla, Karalewa, Keenawatta, Kethsirigama, Kivulegama, Koknahara, Kumana, Madana, Madawalalanda, Moragahapallama, Muwangala, Padagoda, Pahalalanda, Pallanoya. Pannalgama, Thimbirigolla, Thottama, Uksiripura, Wadinagala,	4988
Dehiattakandiya	Bakmeedeniya, Dehiattakandiya, Ihalagama, Mawanagama, NawaMedagama, Rideela, Sadamadulla, Selasumgama, Serupitiya, Wewmedagama	5448
Lahugala	Dewalagoda, Hulannuge West, Panama North, Pansalgoda PeraniLahugala	138

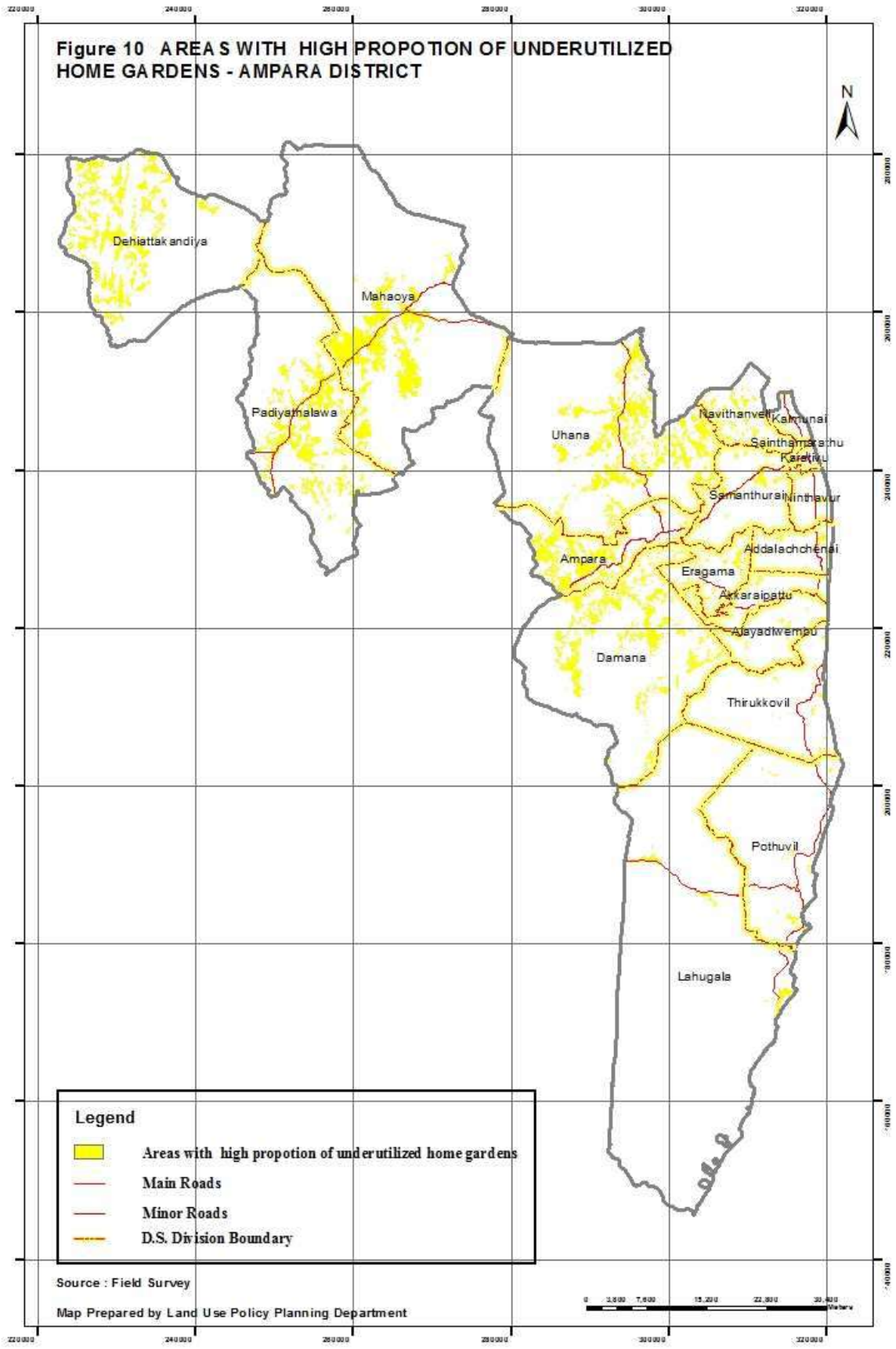
Irakkamam	Irakkamam 01, Irakkamam 02, Irakkamam 05, Irakkamam 06, Irakkamam 07, Varipathanchenai 01, Varipathanchenai 02, Varipathanchenai 03.	407
Kalmunai	Kalmunai 02A, 02B, 01B, Kalmunaikudi 14 Natpiddimunai 01, 03, 02, 04, 05, Pandiruppu 01B, 01C, 02, 02A, 02C, Periyaneelavanai 01, 01A, 01B, Senaikudiyiruppu 01A, Senaikudiyiruppu 01B	87
Mahaoya	Aranthalawa, Bedirekka, Bogamuyaya, Borapola, Dambadeniya, Iddapola, Kekirihena, Kelavinna, Kudahasgala, Lahugala, Mahaoya, Pollebedda, Poolawala, Samagipura, Tempitiya, Thepelpol, UnuwathuraBubula	6714
Navithanveli	Annamalai 01, 02, 03, Central Camp 01, 02, 03, 04, 05, 06 Chalambaikerny 01, 02, 03, 04, 05, Chavalakade, Navithanveli 01, Navithanveli 02, Sorikalmunai 1, 3	810
Ninthavur	Ninthavur 10, Ninthavur 23, Ninthavur 25	90
Padiyathalawa	Dorakumbura, Galode, Hagamwela, Holike, Kehelulla, Kirawana Kolamanthalawa, Komana, Marangala, Miriswatta, Moradeniya Padiyathalawa, Palathuruwella, Pallegama, Pulungasmulla Saranagama, Serankada, Thalapitaoya Left, Thalapitaoya South Unapana	4962

Table 13: Underutilized Home gardens and their total extents in the district (contd.)

DS Division	GN Divisions	Total Extent (ha)
Pothuvil	Canaharkiramam, Hijra Nagar, Inspector Etham, Kalappukaddu Komarie 01, Komarie 02, Kundumadu, Passarichchenai, RasakMoulana Nagar, Sangaman Kanda, Sarvodayapuram. SinnaUllai, Vaddively, Victor Estate 1	346
Sainthamarathu	Sainthamarathu 16	0.2

Samanthurai	Kallarichchel 01, 02, 03 Block J East 01, 02, 03, Block J West 01, Block J West 02, Karuwaddukal 01, 03, Maddakalaputharavai 01, Malayadikiramam 01, 02, 03, Malkampiddy, Malwatte 01, 02, 03, 04 Sammanthurai 02, 03, 05, 07, 09, 10, 11, 12, Sammanthurai Tamil Div01, 04 Sennelgramam 01, 02, Udanga 01, Udanga 02, Valathapitty 01,02, Veeramunai 01, 02, 03, 04	817
Thirukkovil	Kanchikudicharu, Kanchirankuda, Sangamam, Sangamangramam Thambaddai 1. 02, Thambiluvil 1 East, Thambiluvil 1 South Thambiluvil 2 East, Thambiluvil 2 North, Thambiluvil 2 West Thandiyadi, Thirukkovil 1, 2, 3, 4, Vinayagapuram 1, 2, 3, 4,	231
Uhana	Abhayapura, Bakkiella, Bandaradoowa, Bokkabedda Buddhangala, Dadayanthalawa East, Dadayanthalawa West Dematamalpelessa, Galahitiyagoda, Galapitagala East Galapitagala West, Gemunupura, Gonagala, Himidurawa Kahatagasyaya, Kohombana, Komariya, Kothmale Kumarigama, Kumudugama, Lathugala, Mahakandiya Mayadunna, Nawagiriyawa, Nugelanda North, Nugelanda South PalamKandavura, Piyangala, Rajagalathenna North Rajagalathenna South, Rajagama North, Rajagama South Ruhunugama, Sandanadapura, Senagama North, Senagama South Siyambalawewa, Suhadagama South, Udagirigama East Udagirigama West, Udayapura, Uhana, UhanaThissapura East UhanaThissapura West, Veheragama East, Veheragama West, Velikahagolla, Verenketagoda, Walgampura, Weeragoda North Weeragoda South, Wijayapura East, Wijayapura West	6718
Total		35154.2

Figure 10 AREA S WITH HIGH PROPORTION OF UNDERUTILIZED HOME GARDENS - AMPARA DISTRICT



(c) Underutilized Agricultural Lands

Some of the agricultural lands in the district are underutilized due to various reasons.

Underutilized Paddy Lands

Underutilized paddy lands are cultivated only during one season. The divisions where the underutilized paddy lands are available and their total extents are given in the Table 14. Distribution of these lands is shown on the Figure 11. The reasons for underutilization and the recommendations are given in the Table 15. The reasons will vary from one land to another.

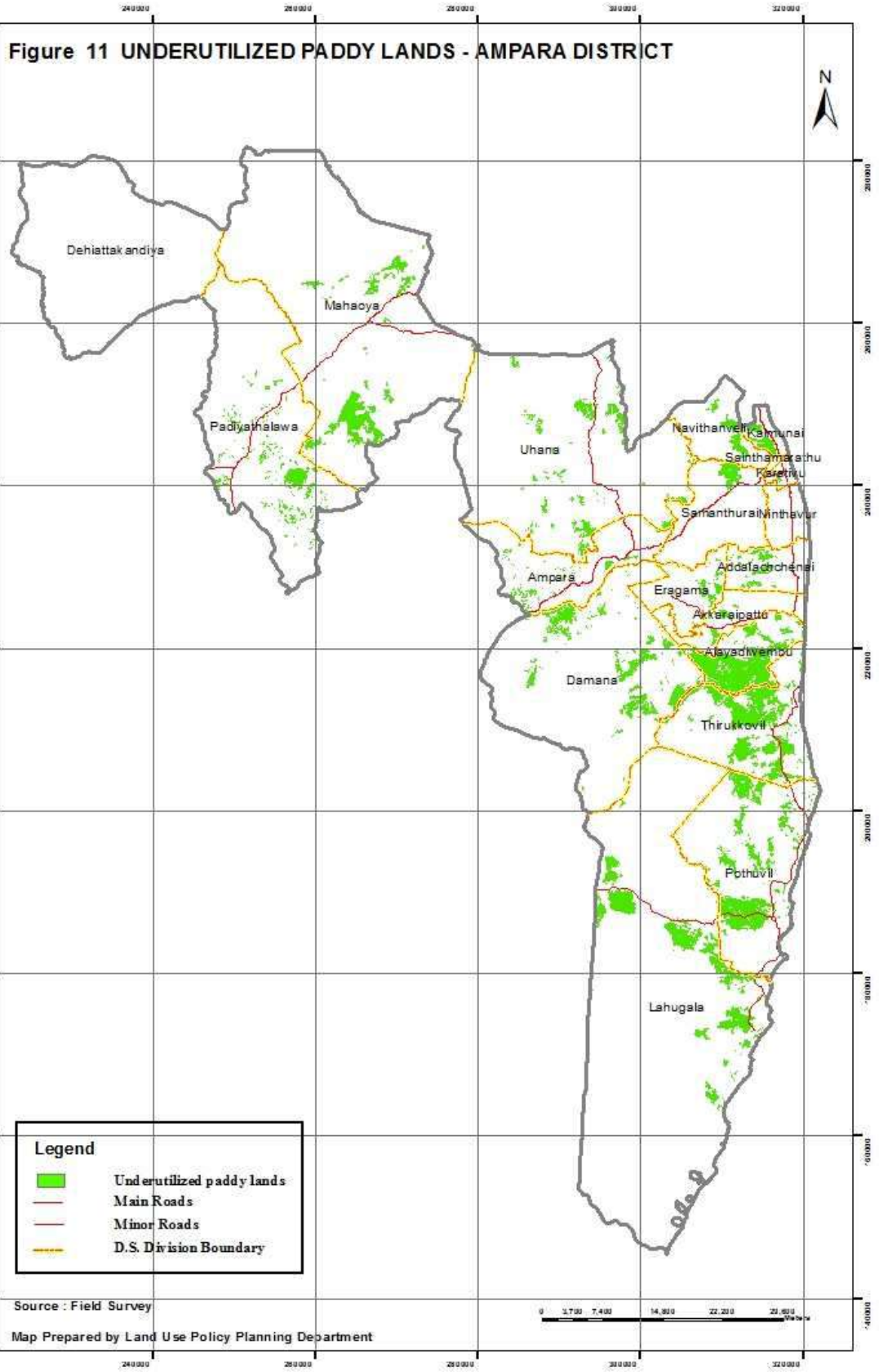
Table 14. Underutilized paddy lands and their extents in the district

DS Division	GN Division	Approximate Extent (ha)
Addalachchenai	Addalachchenai 05, 09, 17, Deegawapie 01, 02, Oluvil 01, Palamunai 05	617
Akkaraipattu	AlimNagar, Easankanichcheemai, Town Division 04, 05	347
Alayadiwembu	Akkaraipattu 74, 08. 8/3, 9, Alayadivembu, Aligambai, Kannakikiramam 01, 02, Kolavil 01, 02, 03, Navatkadu, Panankadu, SinnaPanankadu, Sinnamugathuwaram, Vachchikuda	4446
Ampara	Ambagahawella, Ambamalthalawa, Dambethalawa, Kotavehera Mihindupura, NamaOya 1, 2, 3, Usbima, Namalthalawa, Paragahakele East, Paragahakele West, Samapura, Wavinna North, Wavinna South	630
Damana	18AJanapadaya, Ambalanoya, Damana, Dewalahida, Diviyagala, Eggaloya, Galkanda, Galmaduwa, Helagampura, Hindakalugama, Hingurana, Kalugolla, Karalewa, Keenawatta, Kethsirigama, Kivulegama, Koknahara, Kumana, Madana, Madawalalanda, Moragahapallama, Padagoda, Pahalalanda, Pallanoya, Pannalgama, Thimbirigolla, Thottama, Uksiripura, Veheragala Wadinagala	3419
Irrakkamam	Irrakkamam 01, 02, 04, 06, 07	441
Kalmunai	Kalmunai 01, Natpiddimunai 03, 02, 04, 05, Periyaneelavanai 01, 01A, 01B, Senaikudiyiruppu 01, 01A, 01B	587
Karathivu	Karativu 06, 07, 10, 11, 12, Mavadipalli East	79
Lahugala	Dewalagoda, Hulannuge, Hulannuge West, Kandahindagama, Panama Central. Panama North, Panama South, Panama West, Pansalgoda, PeraniLahugala, Shasthrawela	5002
Mahaoya	Aranthalawa, Bedirekka, Bogamuyaya, Borapola, Iddapola, Kelavinna, Kudahasgala, Lahugala, Mahaoya, Pollebedda, Poolawala, Samagipura, Tempitiya, UnuwathuraBubula	3137
Navithanveli	Annamalai 01, 02, 03, Central Camp 01, Chalambaikerny 02, Chavalakade Navithanveli 01, 02, Sorikalmunai 1, 2	638
Ninthavur	Ninthavur 10, 22, 23, 24, 25	15
Padiyathalawa	Dorakumbura, Galode, Hagamwela, Holike, Kehelulla, Kirawana, Kolamanthalawa, Komana, Marangala, Miriswatta, Moradeniya, Padiyathalawa, Palathuruwella, Pallegama, Pulungasmulla, Saranagama,	1790

	Serankada, Thalapitaoya Left, Thalapitaoya South	
Pothuvil	Unapana, Canaharkiramam, Hidayapuram 1, Hijra Nagar, Inspector Etham, Kalappukaddu, Komarie 01, 02, Kundumadu, Pakkiyawatta 1, 2, RasakMoulana Nagar, Sangaman Kandy, Vaddively, Victor Estate 1, 02	4637
Sainthamarathu	Sainthamaruthu 1	0.7
Sammanthurai	Malkampiddy, Valathapitty 01, 02, 04	549
Thirukkovil	Kanchikudicharu, Kanchirankuda, Sangamam, Sangamangramam, Thambaddai 1, 02, Thambiluvil 1 East, Thambiluvil 1 South, Thambiluvil 1 West, Thambiluvil 2 West, Thandiyadi, Thangavelayudapuram, Thirukkovil 3, 04, Vinayagapuram 1, 2, 3, 4	5050
Uhana	Abhayapura, Bakkiella, Bandaradoowa, Bokkabedda, Buddhangala, Dadayanthalawa West, Dematamalpelessa, Galapitagala East, Galapitagala West, Gonagala, Gonagolla, Himidurawa, Kahatagasyaya, Komariya, Kothmale, Kumudugama, Lathugala, Mahakandiya, Mayadunna, Nawagiriya Nugelanda North, Nugelanda South, Piyangala, Ruhunugama, Senagama North, Udagirigama West, Velikahagolla, Verenketagoda, Walgampura Weeragoda South, Wijayapura East, Wijayapura West	2226
Total		33610.7

Table 15. Reasons for the underutilization of paddy lands and recommendations

Reasons	Recommendations
Lack of water	Rehabilitation of irrigation structures
Lack of capital	Facilitate to obtain cultivation loans
Inundation	Carry out a feasibility study for drainage improvement
Presence of degraded areas	Provide training on use of organic matter for degraded areas Explore other land use options



Underutilized other Agricultural Lands

The underutilized other agricultural lands include lands devoted to field crops and plantation crops such as coconut and cashew. The reasons for underutilization and recommendations are given in the Table 16. The underutilized other agricultural lands and their extents are given in the Table 17 and their distribution are shown on the Figure12and13.

Table 16.Reasons for underutilization of other agricultural lands and the recommendations.

Reasons	Recommendations
Lack of capital	-Awareness creation on loans and subsidy schemes
Water scarcity	-Carry out a feasibility study to use the ground water by constructing agricultural wells. -Introduce soil and water conservation measures.
Wild life threat	-Extension of the existing electric fence or establishment of new fence to keep away wild animals.
Presence of degraded lands	-Introduce conservation farming
Land tenure/ownership issues	-Resolve the issues by studying the cases separately.

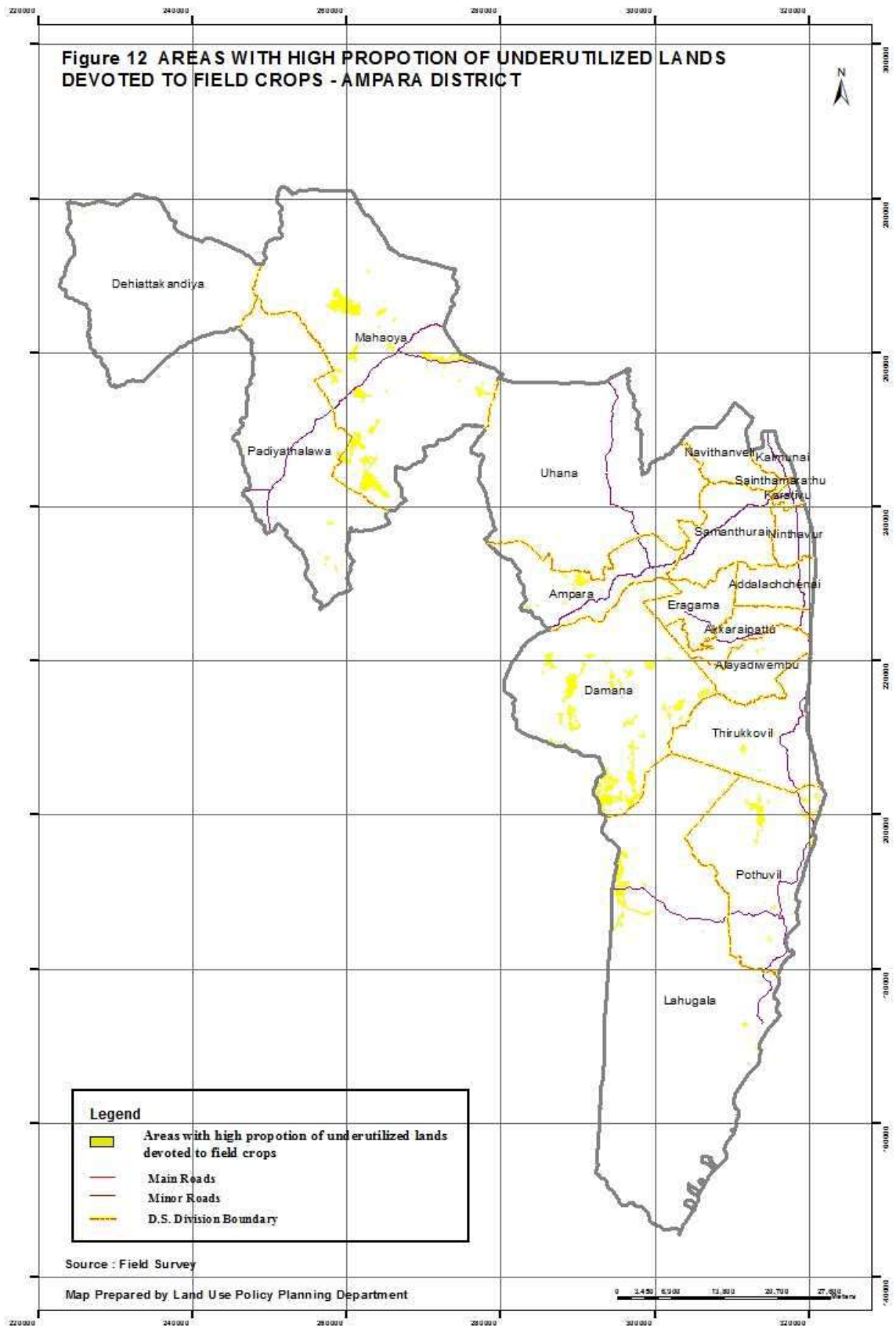
Table 17. Underutilized lands devoted for field crops, coconut and cashew and their extents in the district.

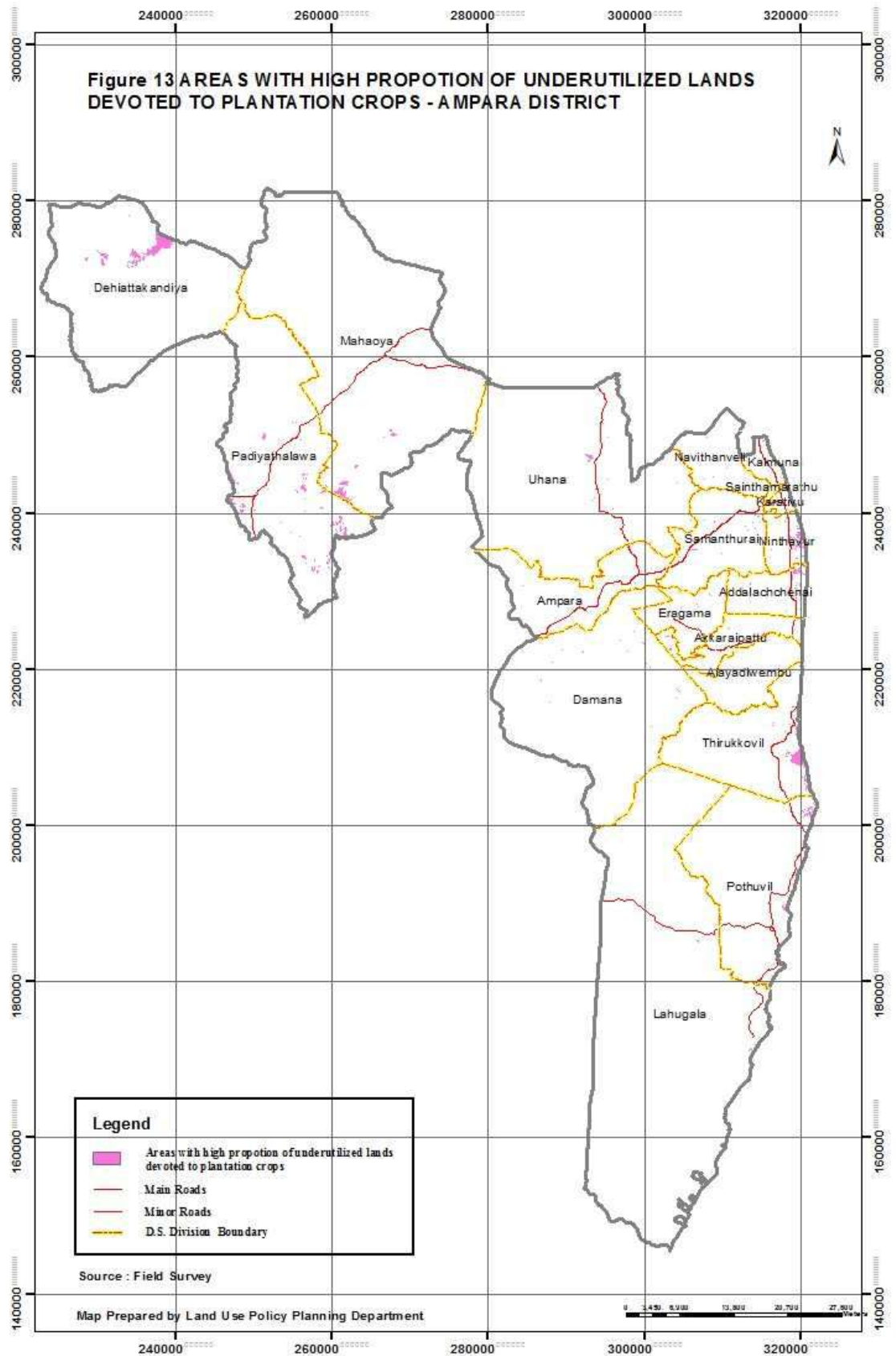
Type of crop	DS Division	Extent (ha)
Field Crops	Addalachchenai	8.0
	Akkaraipattu	0.5
	Alayadiwembu	28.2
	Ampara	100.8
	Damana	1982.5
	Dehiyatakandiya	24.6
	Lahugala	938.6
	Mahaoya	3204.7
	Padiyathalawa	119.6
	Pothuvil	797.6
	Thirukkovil	139.5
Coconut	Uhana	1189.1
	Addalachchenai	165.4
	Akkaraipattu	33.1
	Alayadiwembu	17.7
	Ampara	6.6
	Damana	43.3
	Dehiaththakandiuya	4.83
	Irrakkamam	35.8

Cashew

Kalmunai	4.6
Karathivu	0.01
Lahugala	11.67
Mahaoya	11.1
Navithanveli	7.4
Ninthavur	176.4
Padiyathalawa	15.7
Pothuvil	111.1
Sammanthurai	32.3
Thirukkovil	326.3
Uhana	64.9
Dehiaththakandiya	370.2
Karathivu	3.4
Mahaoya	25.2
Padiyathalawa	12.5

Figure 12 AREAS WITH HIGH PROPOTION OF UNDERUTILIZED LANDS DEVOTED TO FIELD CROPS - AMPARA DISTRICT





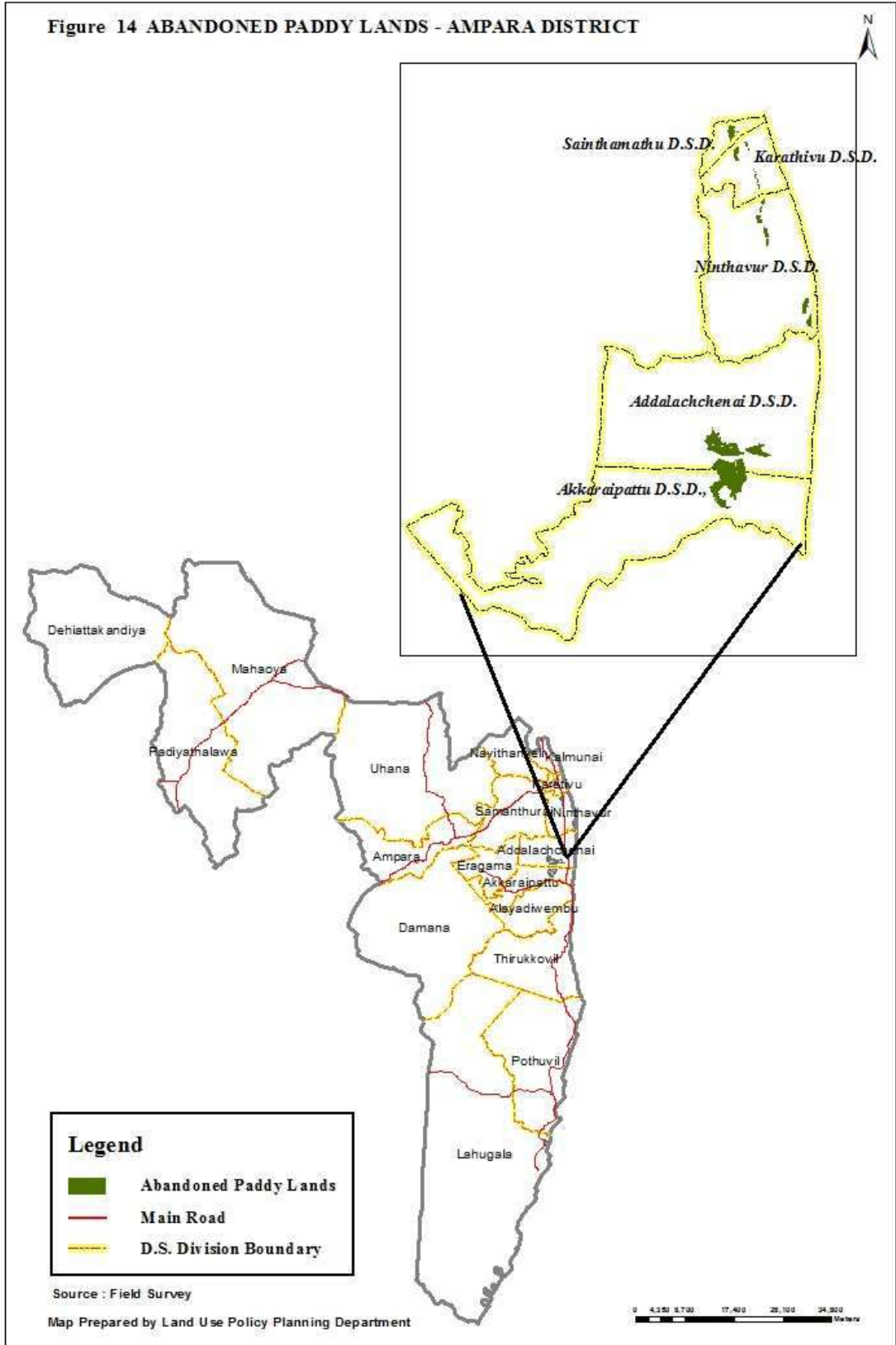
(d) Abandoned Agricultural lands

Some of the paddy lands in the district have been abandoned due to physical limitations. The approximate extents and reasons for abandonment are given in the Table 18 and their locations are shown in the Figure 14. To resolve the issue, further studies are needed. However, removal of stagnated water using water pumps was suggested at the stakeholder discussions but economic feasibility of this recommendation has to be studied. There are no other agricultural lands abandoned in the Ampara district.

Table 18. Abandoned paddy lands and their extents in the district.

DS Division	Location	Extent (ha)	Reasons
Addalachchenai	Sampukalappu	217.9	Sea water intrusion (These lands are located at lower elevation)
Akkaraipattu	Sinnamullatheevu	160.7	
Lahugala	Panama west, Panama Sastrawela	24.6	
Ninthavur	Nochchiyady, Nintavur 24	61.2	
Sainthamarathu	Irravelikandam	36.1	

Figure 14 ABANDONED PADDY LANDS - AMPARA DISTRICT



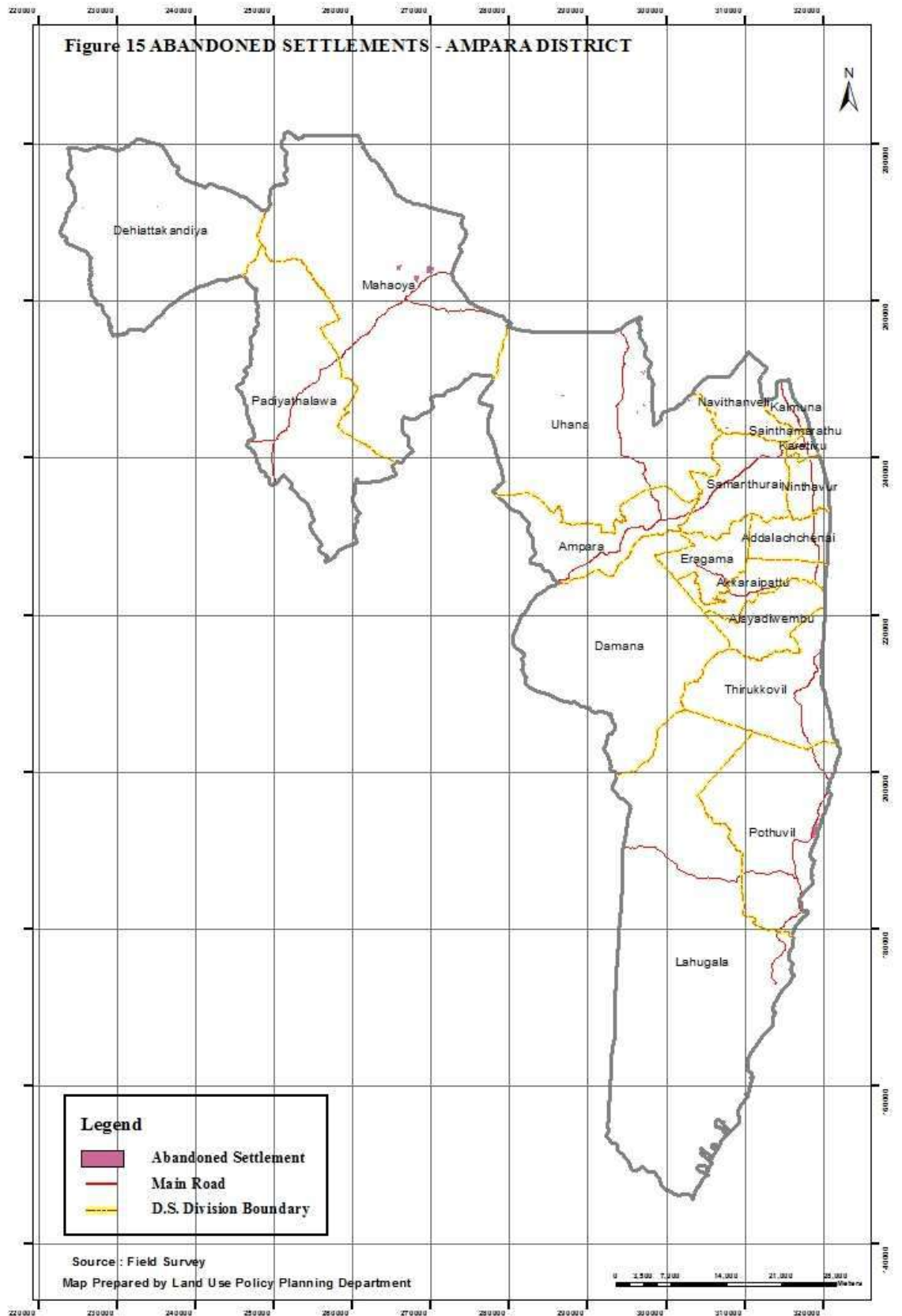
(e) Abandoned Settlements

There are several settlements abandoned mainly due to conflict situation in the past. The

DS Division	Name of the village/settlement	No. of families who have abandoned their homesteads	Approx. extent (ha) abandoned	Proposed Recommendations
Alayadiwembu	Sinnamugathuwaram		7.5	
Mahaoya	PeraweltalawaBeragala, Arapotha, Bedirakka, Kolabana, Bogamuyaya Rathupasuhana, Kohombayaya	83	144.6	Further negotiations are needed to resolve the issue.
Pothuvil	Urani Komarie 02	23	109.3	Resettlement is not possible since these areas come under the purview of the Department of Wild Life Conservation.
Navithanveli	Central camp 01, Central Camp 04, Chawalakada, Annamalai 02 Chalambaikerny 01 Sorikalmunai 3	62	13.3	
Thirukkovil	Thankavelauthapuram, Kanchkudichcharu	45	31.6	
Uhana	Gonagala, WeheragamaEast, Galapitagala East, Suhadagama South, Bandaraduwa, Bakkiella, Rajagama, Piyangala	143	81.9	
Total			388.2	

extents of these home gardens and number of families who have abandoned these home gardens are given in the Table 19 and their distribution are given in the Figure 15. The abandoned settlements in Pothuvil, Navithanveli, Thirukkovil and Uhana D.S. Divisions are located in the areas come under the purview of Department of Wild Life Conservation and therefore resettlement is not possible. More details are given in the Table 3 in the Annex V.

Table 19. Distribution of the abandoned settlements



(f) Unutilized lands

The unutilized state lands were identified and site assessments were done to determine their suitability for different purposes such as housing, agriculture, tourism and service centers. The criteria used to determine the suitability for different uses are given in the Annex VI. The extents and their suitability for different uses are given in the Table 20 and their distribution is shown in the Figure 16.

DSD	GND	Total Extent	Extents ^a for Recommended use			
			Agriculture ^b	Settlement	Service Centre	Tourism
Addalachchenai		5.5			5.4	
Alayadiwembu		1.6	1.6			
Dehiattakandiya		181.1		160.9	20.1	
Kalmunai		11.5		11.5		
Ninthavur		4.6			4.6	
Navithanveli		37			36.9	
Thirukkovil		11.8				11.8
Ampara		344	286.3	52.4	5.1	
Damana		349.9	301.4		48.4	
Eragama		87.7		23.4	64.3	
Lahugala		96.8	2.7	79.8	14.2	
Mahaoya		58.1	33.6	18	6.4	
Padiyathalawa		101.8	82.7		19	
Pothuvil		3.2		1.7	1.4	
Uhana		11.6			11.6	

Total	1305.2	708.3	347.7	237.4	11.8
-------	--------	-------	-------	-------	------

Table 20. Unutilized lands and their suitability for different uses

^aAll extents are in ha, ^bAgriculture including paddy



Photograph 6: Unutilized Lands

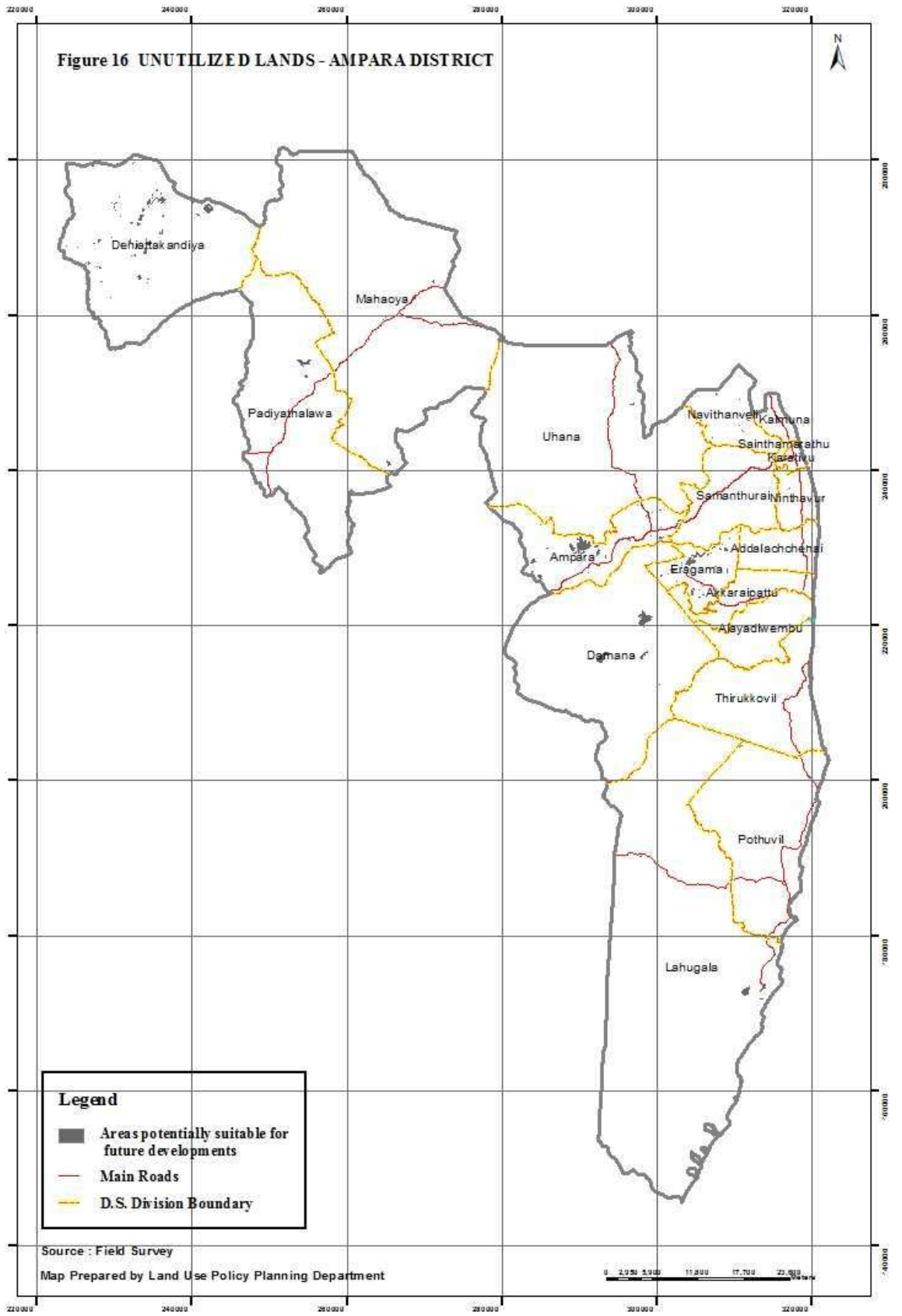


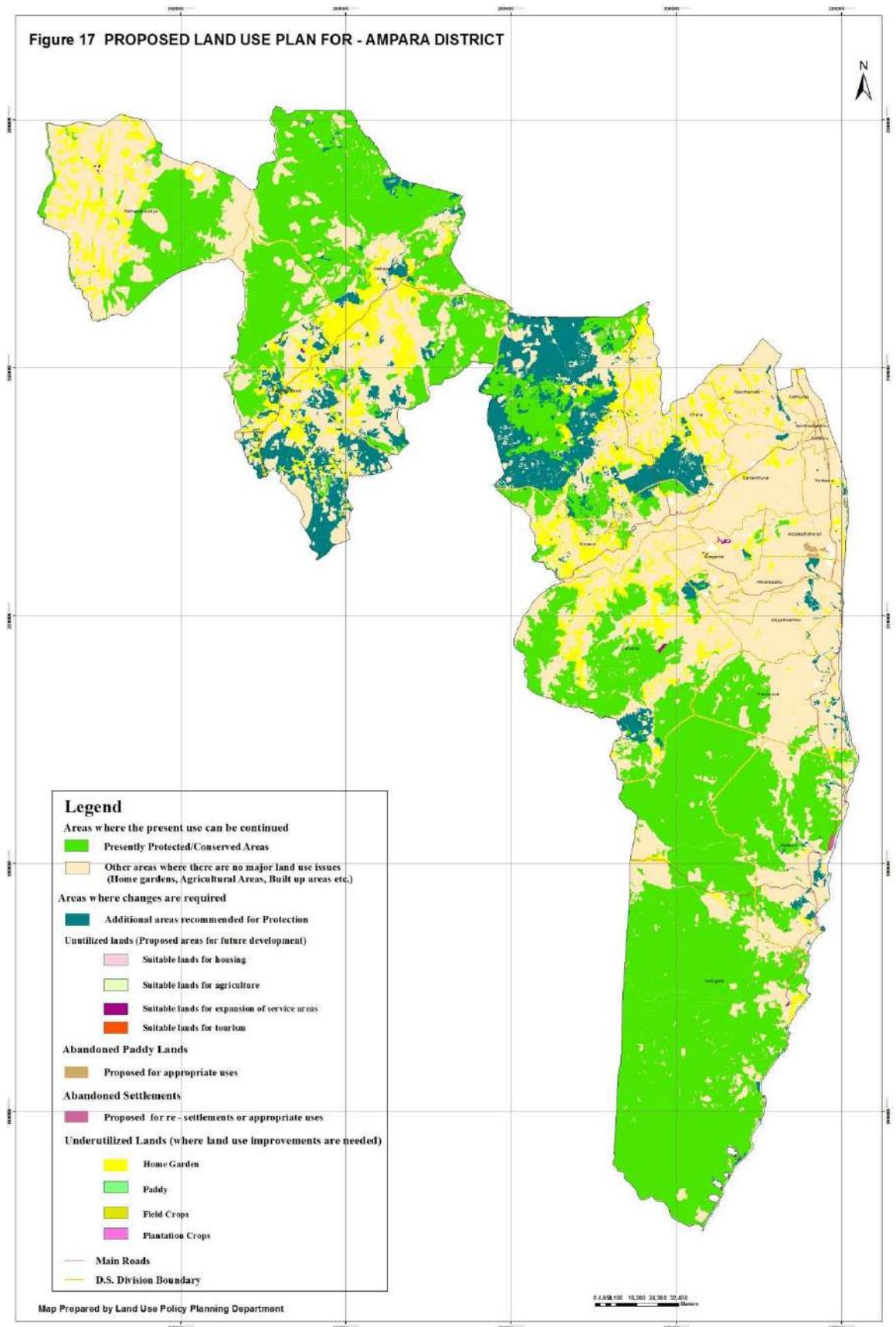
Figure 16 UNUTILIZED LANDS - AMPARA DISTRICT

- Legend**
- Areas potentially suitable for future developments
 - Main Roads
 - D.S. Division Boundary

Source : Field Survey
 Map Prepared by Land Use Policy Planning Department

0 2,950 5,900 11,800 17,700 23,600

Figure 17 PROPOSED LAND USE PLAN FOR - AMPARA DISTRICT



Other issues related to land use



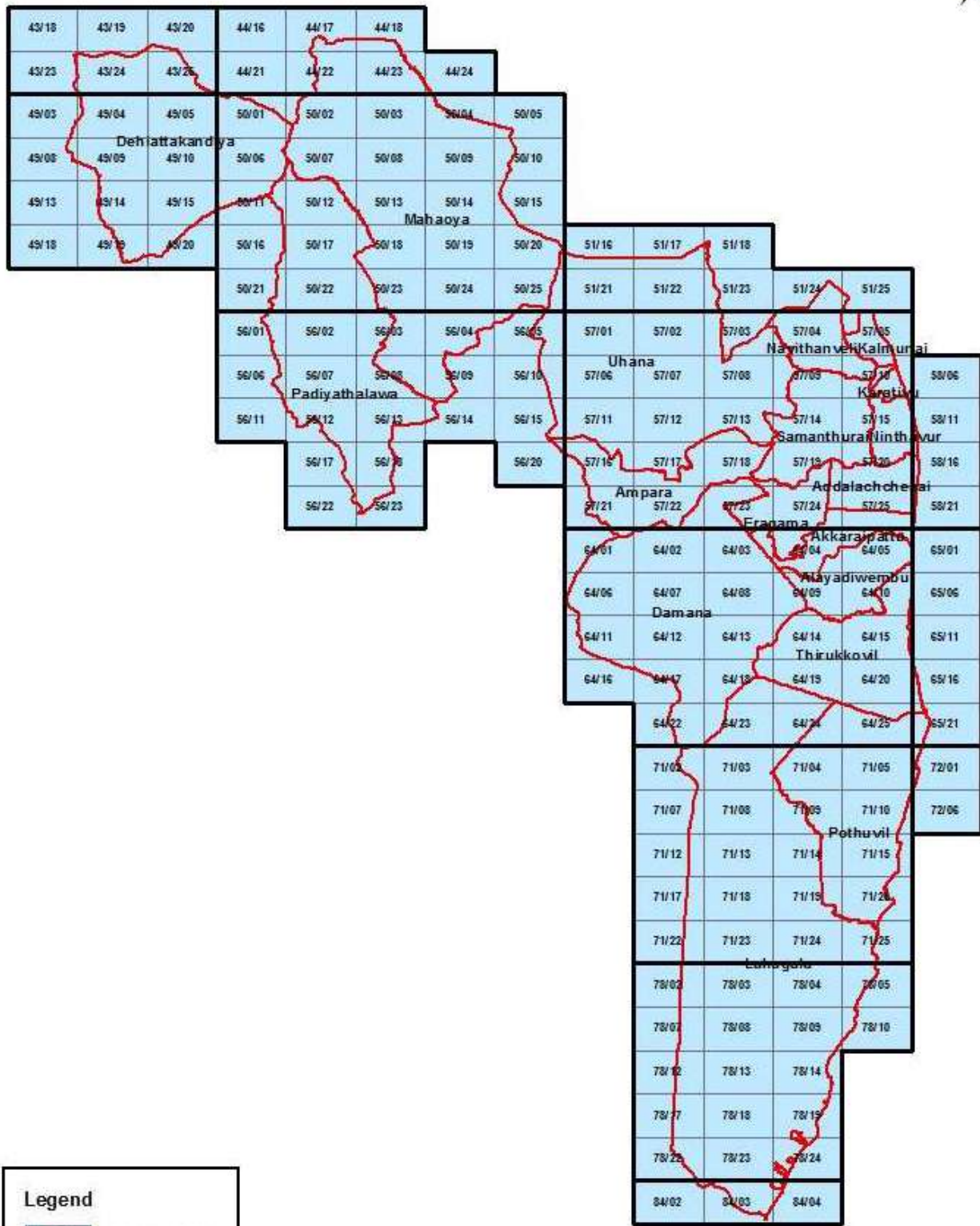
Photograph 7: Encroachments on tank catchment

Lands being misused

There are lands that are being misused. These misuses should be rectified by imposing existing law. Tank catchments in Kalmunai and Irrakkamam DS Divisions are encroached for housing and for farming. These areas are located in several GN Divisions and the information are given in the Table below.

DS DIVISION	GN DIVISION	Misuse
Kalmunai	Kalmunai 01A, 01C, 02 D, 01 E, 2A , 2B, 03 A, 01, Natpittimunai 01-04, Pandiruppu 2A, Periyaneelavanai 01, 01A, 01B, Chenaikkudiyiruppu 01A, 01B	Encroachments of tank catchment for housing.
Irrakkamam	Irrakkamam 06	Catchments encroached for housing and farming

INDEX MAP OF 1 : 10000 SHEETS - AMPARA DISTRICT



Legend

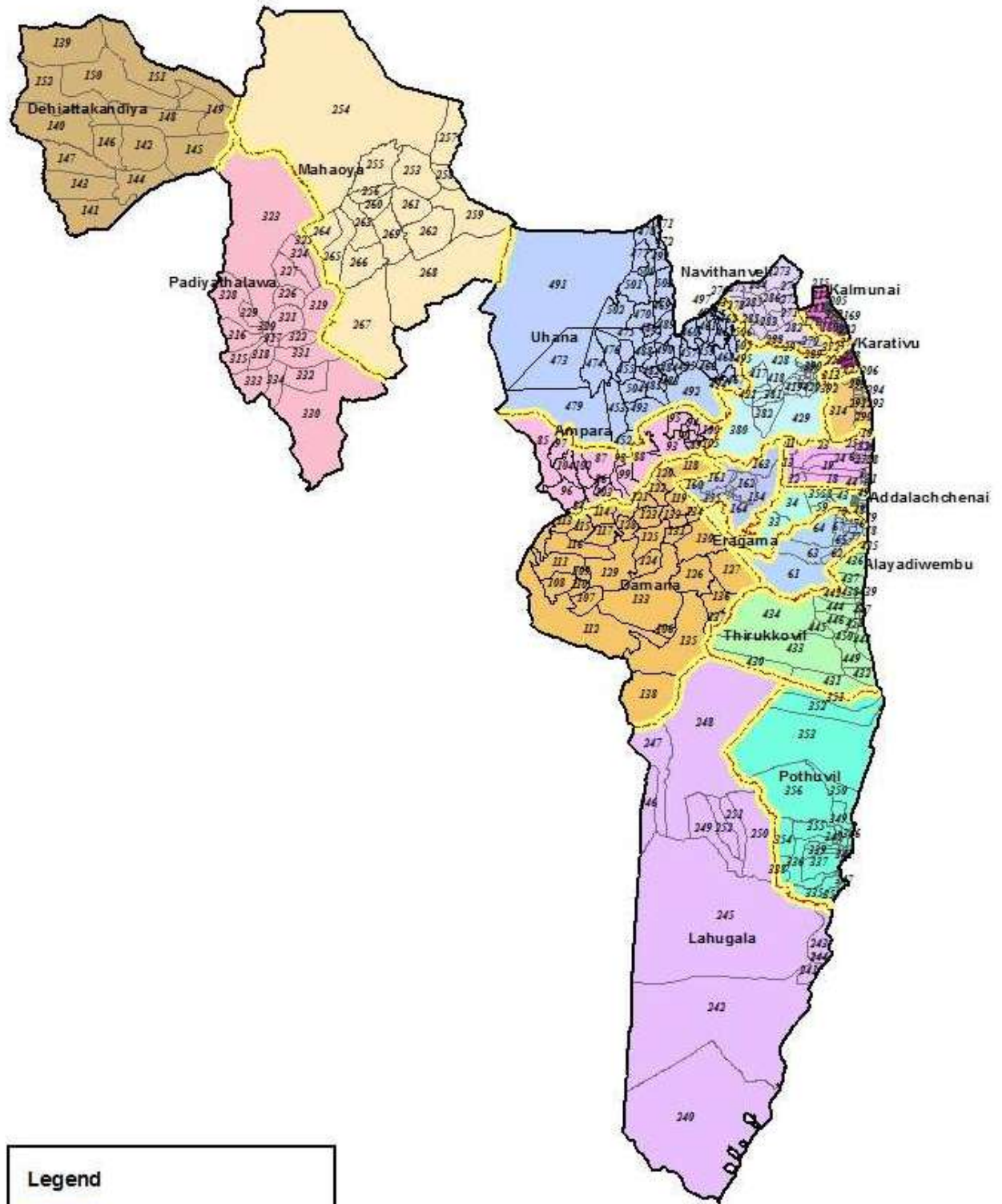
50/08 Sheet Index

Source :- Department of Survey



Map prepared by Land Use Policy Planning Department

G.N.D. BOUNDARY MAP - AMPARA DISTRICT



Legend

- D.S.Division Boundary
- G.N.Division Boundary

Source :- Department of Survey

0 8,500 11,000 22,000 33,000 44,000 Meters

Map prepared by Land Use Policy Planning Department

No:	D.S.Division	G.N.Division Number	G.N.Division Name
1	Addalachchenai	AD/33B	Addalachchenai 10
2		AD/30B/1	Addalachchenai 15
3		AD/30E	Addalachchenai 14
4		AD/30	Addalachchenai 04
5		AD/30D	Addalachchenai 13
6		AD/34B	Palamuna 03
7		AD/34A/1	Palamuna 04
8		AD/35B	Oluvil 02
9		AD/35C/1	Oluvil 05
10		AD/35E	Oluvil 04
11		AD/35A	Deegawapie 01
12		AD/30B/3	Addalachchenai 17
13		AD/35D	Deegawapie 02
14		AD/31	Addalachchenai 02
15		AD/33	Addalachchenai 01
16		AD/30C	Addalachchenai 06
17		AD/30C/2	Addalachchenai 08
18		AD/30B	Addalachchenai 05
19		AD/33A	Addalachchenai 09
20		AD/31A	Addalachchenai 11
21		AD/30A	Addalachchenai 03
22		AD/30A/1	Addalachchenai 12
23		AD/35	Oluvil 01
24		AD/34A/2	Palamuna 05
25		AD/34B/1	Palamuna 06
26		AD/35C/3	Oluvil 07
27		AD/34	Palamuna 01
28		AD/34A	Palamuna 02
29		AD/35C	Oluvil 03
30		AD/35C/2	Oluvil 06
31		AD/30C/1	Addalachchenai 07
32		AD/30B/2	Addalachchenai 16
33	Akaraipattu	AP/20A/4	Alim Nagar
34		AP/20A/3	Easankanichcheemai
35		AP/20A2	Pallikudiyiruppu 02
36		AP/20/2	Karunkoditivu 21
37		AP/20/1	Karunkoditivu 20
38		AP/19A	Karunkoditivu 18
39		AP/18A	Karunkoditivu 17
40		AP/18/19/2	Karunkoditivu 19

41		AP/16	Karunkoditivu 02
42		AP/17	Karunkoditivu 03
43		AP/20	Karunkoditivu 06
44		AP/16A	Karunkoditivu 15
45		AP/17A	Karunkoditivu 16
46		AP/19	Karunkoditivu 05
47		AP/18	Karunkoditivu 04
48		AP/15A/4	Town Division 05
49		AP/15/5	Karunkoditivu 14
		G.N.Division	
No:	D.S.Division	Number	G.N.Division Name
50	Akkaraipattu	AP/15/1	Karunkoditivu 10
51		AP/15A/1	Town Division 02
52		AP/15A/3	Town Division 04
53		AP/15A/2	Town Division 03
54		AP/15/4	Karunkoditivu 13
55		AP/15	Karunkoditivu 01
56		AP/15/3	Karunkoditivu 12
57		AP/15/2	Karunkoditivu 11
58		AP/20A	Paddyadippiddy
59		AP/20A1	Pallikudiyiruppu 01
60		AP/15A	Town Division 01
61	Alayadiwembu	Av/22	Aligambai
62		AV/19	Sinna Panankadu
63		AV/21	Kannakikiramam 02
64		AV/20	Kannakikiramam 01
65		AV/19	Sinna Panankadu
66		AV/17	Kolavil 02
67		AP/21A	Alayadivembu
68		AP/23	Kolavil 03
69		AV/03	Navatkadu
70		AV/1	Vachchikuda
71		AV/08	Akkaraipattu 7/4
72		AV/07	Akkaraipattu 7/3
73		AV/06	Akkaraipattu 7/2
74		AP/21	Akkaraipattu 7
75		AV/05	Akkaraipattu 7/1
76		AV/16	Kolavil 01
77		AP/13	Panankadu
78		AV/14	Sinnamugathuwaram
79		AP/22A	Akkaraipattu 9
80		AP/22	Akkaraipattu 8

81		AV/11	Akkaraipattu 8/2
82		AV/10	Akkaraipattu 8/1
83		AV/12	Akkaraipattu 8/3
84	Ampara	W/86A	Namal Oya (i) Usbima
85		W/86G	Namal Oya (ii)
86		W/86E	Wavinna North
87		W/86B	Ambagahawella
88		W/86K	Kotavehera
89		W/89D	Senanayakepura
90		W/89A	Jayawardhanapura
91		W/89E	Indrasarapura
92		W/89G	Gemunupura
93		W/89B	Samapura
94		W/89C	Thissapura
95		W/89J	Karangawa
96		W/86F	Namal Oya (iii)
97		W/86C	Dambethalawa
98		W/86	Paragahakele West
		G.N.Division Number	G.N.Division Name
No:	D.S.Division		
99	Ampara	W/86J	Paragahakele East
100		W/89I	Nawagampura
101		W/89F	Saddhathissapura
102		W/86H	Ambamalthalawa
103		W/86D	Wavinna South
104		W/86I	Namalthalawa
105		W/89H	Mihindupura
106	Damana	W/25D	Kumana
107		W/26	Wadinagala
108		W/26B	Pallanoya
109		W/26D	Galkanda
110		W/26C	Kivulegama
111		W/26E	Dewalahida
112		W/25A	Pannalgama
113		W/28E	Kalugolla
114		W/28A	Pahalalanda
115		W/28D	Hindakalugama
116		W/28B	Koknahara
117		W/28	Padagoda
118		W/27H	Galmaduwa
119		W/27F	Karalewa
120		W/27B	Muwangala

121		W/27D	Diviyagala
122		W/27I	Uksiripura
123		W/27E	Keenawatta
124		W/24B	Eggaloya
125		W/27	Damana
126		W/24C	Thimbirigolla
127		W/24D	Ambalanoya
128		W/28C	Moragahapallama
129		W/26A	Kethsirigama
130		W/24A	Madawalalanda
131		W/27C	Alahena
132		W/27A	Hingurana
133		W/24	Madana
134		W/27G	Helagampura
135		W/25	Thottama
136		W/25E	18A . Janapadaya
137		W/25C	Veheragala
138		W/25B	Bakmitiyawa
139	Dehiattakandiya	142L	Rideela
140		142G	Serupitiya
141		142A	Wewmedagama
142		142H	Lihiniyagama
143		142B	Nawa Medagama
144		142C	Paranagama
145		142E	Sandunpura
146		142F	Sadamadulla
147		142D	Ihalagama
		G.N.Division Number	G.N.Division Name
148	Dehiattakandiya	142I	Mawanagama
149		142N	Kadirapura
150		142J	Dehiattakandiya
151		142M	Selasumgama
152		142K	Bakmeedeniya
153	Eragama	SP85A	Varipathanchenai 02
154		SP84B	Irakkamam 01
155		SP84F	Irakkamam 05
156		SP84E	Irakkamam 04
157		SP84D	Irakkamam 08
158		SP84A	Irakkamam 03
159		SP84H	Irakkamam 09
160		SP85B	Varipathanchenai 03

161		SP85	Varipathanchenai 01
162		SP84	Irakkamam 06
163		SP84C	Irakkamam 07
164		SP84G	Irakkamam 02
165	Kalmunai	KP/54	Kalmunaikudi 14
166		KP/54A	Kalmunaikudi 13
167		KP/55	Kalmunaikudi 12
168		KP/56A	Kalmunaikudi 11
169		KP/59/2	Kalmunai 03A
170		KP/61/8	Kalmunai 02A
171		KP/61/9	Kalmunai 02B
172		KP/59/1	Kalmunai 03
173		KP/58A	Kalmunaikudi 03
174		KP/58	Kalmunaikudi 01
175		KP/58B	Kalmunaikudi 04
176		KP/58C	Kalmunaikudi 02
177		KP/69/1	Senaikudiyiruppu 01
178		KP/62/1	Natpiddymunai 01
179		KP/61/1	Kalmunai 01
180		KP/62/2	Natpiddymunai 02
181		KP/69/2	Senaikudiyiruppu 01A
182		KP/69/3	Senaikudiyiruppu 01B
183		KP/64C	Natpiddymunai 04
184		KP/64	Natpiddimunai 03
185		KP/64D	Natpiddymunai 05
186		KP/64B	Natpiddimunai 02
187		KP/62/3	Natpiddimunai 03
188		KP/64A	Natpiddimunai 01
189		KP/61/3	Kalmunai 01B
190		KP/61/2	Kalmunai 01A
191		KP/61/5	Kalmunai 01D
192		KP/61/6	Kalmunai 01E
193		KP/61/4	Kalmunai 01C
194		KP/59A	Islamabad & Kalmunai Town
195		KP/61/7	Kalmunai 02
196		KP/59	Kalmunai Muslim Section 03
No:	D.S.Division	G.N.Division Number	G.N.Division Name
197	Kalmunai	KP/56D	Kalmunaikudi 08
198		KP/56B	Kalmunaikudi 09
199		KP/66/A/4	Pandiruppu 02C
200		KP/66/A/3	Pandiruppu 02B

201		KP/66/A/2	Pandiruppu 02A
202		KP/72	Periyaneelavanai Muslim Sec.01
203		KP/67B	Maruthamunai 01
204		KP/67A	Maruthamunai 03
205		KP/67	Maruthamunai 02
206		KP/67C	Maruthamunai 04
207		KP/67D	Maruthamunai 05
208		KP/66/4	Pandiruppu 01C
209		KP/66/A/1	Pandiruppu 02
210		KP/68	Maruthamunai 06
211		KP/66/2	Pandiruppu 01A
212		KP/66/3	Pandiruppu 01B
213		KP/66/1	Pandiruppu 01
214		KP/71/1	Periyaneelavanai 01
215		KP/71/2	Periyaneelavanai 01A
216		KP/71/3	Periyaneelavanai 01B
217		KP/71/4	Periyaneelavanai 02
218		KP/72A	Periyaneelavanai Muslim Sec.02
219		KP/56E	Kalmunaikudi 07
220		KP/56F	Kalmunaikudi 06
221		KP/56	Kalmunaikudi 05
222		KP/56C	Kalmunaikudi 10
223	Karativu	43	Mavadipalli East
224		42C	Karativu 09
225		42A	Karativu 10
226		42E	Karativu 12
227		42D	Karativu 11
228		42	Karativu 07
229		42B	Karativu 08
230		44A	Maligaikadu West
231		44C	Maligaikadu East
232		44B	Maligaikadu Central
233		44	Karativu 01
234		45	Karativu 02
235		45A	Karativu 03
236		44D	Karativu 06
237		45C	Karativu 05
238		45B	Karativu 04
239		43A	Mavadipalli West
240	Lahugala	PP/01	PP01

241		PP/04	Panama North
242		PP/02	Panama South
243		PP/06	Shasthrawela
244		PP/05	Panama Central
245		PP/03	Panama West
		G.N.Division Number	G.N.Division Name
No:	D.S.Division		
246	Lahugala	PP/13	Kandahindagama
247		PP/12	Hulannuge West
248		PP/11	Hulannuge
249		PP/10	Perani Lahugala
250		PP/07	Pansalgoda
251		PP/08	Dewalagoda
252		PP/09	Lahugala
253	Mahaoya	144C	Bedirekka
254		144B/1	Bogamuyaya
255		144B	Unuwathura Bubula
256		144D	Thepelpola
257		145	Tempitiya
258		145A	Poolawala
259		136A	Aranthalawa
260		144	Mahaoya
261		136A/2	Samagipura
262		136A/1	Borapola
263		137A/1	Dambadeniya
264		144A/1	Iddapola
265		144A	Kekirihena
266		137A/2	Kudaharasgala
267		137	Lahugala
268		136B	Pollebedda
269		136	Kelavinna
270	Navithanveli	SP/90/1	Sorikalmunai 1
271		SP/93	Chavalakade
272		SP/94/1	Navithanveli 01
273		SP/95A	Annamalai 01
274		SP/95/2	Annamalai 02
275		SP/93/6	Central Camp 06
276		SP/93E	Central Camp 05
277		SP/93C	Central Camp 03
278		SP/93D	Central Camp 04
279		SP/93/I	Central Camp 01
280		SP/93/2	Central Camp 02

281		SP/94E	Chalambaikerny 04
282		SP/94C	Chalambaikerny 02
283		SP/94D	Chalambaikerny 03
284		SP/95/3	Annamalai 03
285		SP/94F	Chalambaikerny 05
286		SP/94/2	Navithanveli 02
287		SP/94A	Chalambaikerny 01
288		SP/90B	Sorikalmunai 3
289		SP/90A	Sorikalmunai 2
290	Ninthavur	36	Ninthavur 10
291		36A	Ninthavur 23
292		37G	Ninthavur 22
293		37C	Ninthavur 09
294		37B	Ninthavur 08
		G.N.Division Number	G.N.Division Name
295	Ninthavur	37F	Ninthavur 21
296		37E	Ninthavur 20
297		38D	Ninthavur 19
298		37	Ninthavur 05
299		37D	Ninthavur 18
300		38C	Ninthavur 17
301		41	Ninthavur 01
302		41A	Ninthavur 11
303		40	Ninthavur 02
304		40A	Ninthavur 13
305		41B	Ninthavur 12
306		38	Ninthavur 04
307		39A	Ninthavur 14
308		38B	Ninthavur 16
309		39B	Ninthavur 15
310		39	Ninthavur 03
311		38A	Ninthavur 06
312		37A	Ninthavur 07
313		39C	Ninthavur 24
314		38E	Ninthavur 25
315	Padiyathalawa	140	Khelulla
316		140C	Kirawana
317		140D	Thalapitaoya Left
318		138	Holike
319		137B	Moradeniya
320		140A	Padiyathalawa

321		141D	Saranagama
322		140B	Thalapitaoya South
323		141A	Galode
324		137D	Pulungasmulla
325		137C	Palathuruwella
326		141	Pallegama
327		137A	Serankada
328		141C	Hagamwela
329		141B	Unapana
330		139B	Komana
331		139A	Marangala
332		139	Dorakumbura
333		138A	Miriswatta
334		138B	Kolamanthalawa
335	Pothuvil	P/05	Sarvodayapuram
336		P/11	Vaddively
337		P/15	Kalappukaddu
338		P/17	Victor Estate 2
339		P/14	Pakkiyawatta 2
340		P/13	Pakkiyawatta 1
341		P/04	Jalaldeen Square
342		P/01	Pothuvil 01 / Unit I
343		P/02	Pothuvil 01 / Unit II
		G.N.Division Number	G.N.Division Name
344	Pothuvil	P/08	Pothuvil 02 / Unit 3
345		P/12	Pothuvil Town
346		P/20	Hidayapuram 1
347		P/18	Sinna Ullai
348		P/09	Kundumadu
349		P/27	Rasak Moulana Nagar
350		P/25	Canaharkiramam
351		P/22	Sangaman Kandy
352		P/23	Komarie 01
353		P/24	Komarie 02
354		P/16	Victor Estate 1
355		P/10	Inspector Etham
356		P/26	Hijra Nagar
357		P/19	Passarichchenai
358		P/06	Sinna Puthukkudiyiruppu
359		P/03	Pothuvil 01 / Unit III
360		P/07	Pothuvil 02 / Unit 2

361		P/21	Hidayapuram 2
362	Sainthamarathu	KP/53A	Sainthamaruthu 2
363		KP/53	Sainthamaruthu 1
364		KP/52B	Sainthamaruthu 4
365		KP/52	Sainthamaruthu 3
366		KP/52C	Sainthamaruthu 6
367		KP/52A	Sainthamaruthu 5
368		KP/50	Sainthamaruthu 9
369		KP/50B	Sainthamaruthu 8
370		KP/50A	Sainthamaruthu 7
371		KP/47E	Sainthamaruthu 14
372		KP/47	Sainthamaruthu 17
373		KP/47C	Sainthamaruthu 16
374		KP/47F	Sainthamaruthu 15
375		KP/47A	Sainthamaruthu 11
376		KP/50C	Sainthamaruthu 10
377		KP/47B	Sainthamaruthu 12
378		KP/47D	Sainthamaruthu 13
379		Samanthurai	89D
380	89B		Valathapitty 01
381	89		Malwatte 01
382	89C		Valathapitty 02
383	79A		Block 'J' West 01
384	79Q		Malayadikiramam 04
385	79F		Malayadikiramam 01
386	79P		Malayadikiramam 03
387	79O		Malayadikiramam 02
388	79I		Vilinayadi 02
389	79J		Vilinayadi 03
390	77E		Sammanthurai Tamil Div.04
391	79M		Kallarichchel 02
392	79N		Kallarichchel 03
		G.N.Division Number	G.N.Division Name
No:	D.S.Division		
393	Samanthurai	79	Block 'J' East 01
394		79	Block 'J' East 01
395		79K	Block 'J' East 02
396		77	Sammanthurai Tamil Div.01
397		92	Veeramunai 01
398		92E	Veeramunai 02
399		79B	Udanga 01
400		79C	Vilinayadi 01

401		92D	Sammanthurai 12
402		92I	Veeramunai 03
403		92A	Karuwaddukal 01
404		92G	Karuwaddukal 02
405		92H	Karuwaddukal 03
406		92C	Sammanthurai 11
407		92B	Sammanthurai 10
408		81A	Sammanthurai 09
409		81	Sammanthurai 08
410		80A	Sammanthurai 07
411		80	Sammanthurai 06
412		78B	Sammanthurai 05
413		78	Sammanthurai 02
414		78A	Sammanthurai 04
415		78D	Sammanthurai 03
416		78C	Sammanthurai 01
417		89E	Malwatte 03
418		79E	Sennelgramam 01
419		79H	Sennelgramam 02
420		79R	Block 'J' West 02
421		89A	Malwatte 04
422		79L	Block 'J' East 03
423		77B	Maddakalaputharavai 02
424		77A	Maddakalaputharavai 01
425		77D	Sammanthurai Tamil Div.03
426		77C	Sammanthurai Tamil Div.02
427		79G	Udanga 02
428		92F	Veeramunai 04
429		82	Malkampiddy
430	Thirukkivil	TK/10E	Thangavelayudapuram
431		TK/10C	Thandiyadi
432		TK/10D	Sangamangramam
433		TK/10B	Kanchikudicharu
434		TK/11C	Sangamam
435		TK/12A/1	Thambiluvil 2
436		TK/12A	Thambiluvil 1
437		TK/12	Thambiluvil 1 West
438		TK/12B	Thambiluvil 1 South
439		TK/12C	Thambiluvil 1 East
440		TK/11A	Thambiluvil 2 East
441		TK/11	Thambiluvil 2 North

No:	D.S.Division	G.N.Division Number	G.N.Division Name
442	Thirukkovil	TK/11B	Thambiluvil 2 West
443		TK/10/1	Thirukkovil 2
444		TK/10/2	Thirukkovil 3
445		TK/10D/1	Kanchirankuda
446		TK/10E/1	Thirukkovil 4
447		TK/10	Thirukkovil 1
448		TK/10A/3	Vijayanagapuram 4
449		TK/10A/2	Vijayanagapuram 3
450		TK/10A/1	Vijayanagapuram 2
451		TK/10A	Vijayanagapuram 1
452		Uhana	W/88C/01
453	W/100A/1		Mahakandiya
454	W/102		Kohombana
455	W/88A		Galahitiyagoda
456	W/88B/3		Kumarigama
457	W/93A/1		Udayapura
458	W/93A		Sandanadapura
459	W/93C/4		Weeragoda North
460	W/93A/1		Udayapura
461	W/93A/3		Suhadagama South
462	W/94A/3		Veheragama West
463	W/94A/2		Veheragama East
464	W/94A/4		Gemunupura
465	W/94A/5		Siyambalawewa
466	W/93C/3		Weeragoda South
467	W/93C/2		Kumudugama
468	W/93B/1		Dadayanthalawa West
469	W/104A/1		Kothmale
470	W/104A		Mayadunna
471	W/104/1		Nugelanda North
472	W/104/2		Nugelanda South
473	W/100/1		Lathugala
474	W/100		Bokkabedda
475	W/102A		Verenketagoda
476	W/102/1		Walgampura
477	W/104/3		Rajagalathenna North
478	W/104/5		Piyangala
479	W/100A		Kahatagasyaya
480	W/88B/1		Udagirigama West
481	W/88A/2		Dematamalpelessa

482		W/88	Uhana
483		W/88/3	Palam Kandavura
484		W/88/1	Uhana Thissapura West
485		W/88/2	Uhana Thissapura East
486		W/102A/1	Senagama North
487		W/102A/2	Senagama South
488		W/88B	Udagirigama East
489		W/104C/2	Gonagala
490		W/88B/2	Komariya
No:	D.S.Division	G.N.Division Number	G.N.Division Name
491	Uhana	W/104B/2	Bandaradoowa
492		W/93C	Buddhangala
493		W/88C	Himidurawa
494		W/93C/1	Ruhunugama
495		W/93B	Dadayanthalawa East
496		W/94A/1	Rajagama South
497		W/94A	Rajagama North
498		W/104/4	Rajagalathenna South
499		W/104	Bakkiella
500		W/104C/1	Galapitagala West
501		W/104B/1	Gonagolla
502		W/104B	Nawagiriyawa
503		W/104C	Galapitagala East
504		W/88A/1	Velikahagolla
505		W/93B/3	Wijayapura West
506		W/93B/2	Wijayapura East

Annex V - Table 1.Type of presently protected areas, their location, approximate extent, managing agency and the available issues.

Type	D.S. Division	GN/village	Extent (ha)	Managing Agency	Issues identified in the protected area	Remarks
Forest Reserve	Ampara	Ambagahawella, Paragahakele East Namalthalawa, Namaloya II	933	FD	Encroached for cultivation (Ambagahawella)	
	Pothuvil	Komari 1 (P23), Komari 2 (P24) Sengamam, Kannagigiramam Inspector Eththam Sarvodayapuram, Sengamam	14444	FD	Some of the areas are encroached for cultivation	Advice was given to FD to take legal actions.
	Addalachchenai	Deegawapi 2	123.4	FD		
	Akkaraipattu	Alim Nagar	100.6	FD		
	Alayadiwembu		3.3	FD		
	Dehiaththakandiya	Muwapetikewela	513.0	FD		
	Eragama	Navalady Malayady	128.8	FD		
	Lahugala	Lahugala Peranilahugala Pansalgoda Dewalagoda Hulannuge Hulannuge west Kandahindagama Panama South Panama West Panama North	47200	FD		
	Thirukkivil	Vattamadu	4855.3	FD	Encroached grazing lands for cultivation	Presently a case is filed at the court.
Padiyatalawa	Hagamwela Kirawana Miriswaththa Thalapitaoya West	2825.0	FD	Some of the areas are encroached for cultivation	Advice was given by GA to FD to take legal actions	

Type	D.S. Division	GN/village	Extent (ha)	Managing Agency	Issues identified in the protected area	Remarks
Forest Reserve	Padiyatalawa	Hagamwela Kirawana Miriswaththa Thalapitaoya West	2825.0	FD	Some of the areas are encroached for cultivation	Advice was given by GA to FD to take legal actions
	Damana	Bakmityawa Wadinagala Pannalgama Kumana Thottama Ambalanoya Helagampura Peranigama Madana Madawalalanda Damana	11611.3		Encroachments	Part of the land has been released based on the recommendation given by Divisional Secretary. Rest of the land will be protected.
	Mahaoya	Pollebedda Borapola Aranthalawa Bedirekka Pulawala Tempitiya Bogamuyaya	20645.8		do	Recommended to see the possibility to rearrange the forest boundary
	Sammanthurai	Valathapitiya				

Annex V - Table 1.Type of presently protected areas, their location, approximate extent, managing agency and the available issues.

Type	D.S. Division	GN/village	Extent (ha)	Managing Agency	Issues identified in the protected area	Recommendations/Remarks
Wild life Reserve	Ampara	Samapura Karangawa Kotawehera Dambethalawa	2352.9	DWLC	Encroached for housing (permanent houses were built)	Forward the issue to the National level and see the possibility of releasing lands for permanent settlers.
	Uhana	Kahatagasyaya Mahakandiya Himidurawa Buddhangala Thissapura East Buddangala	8204.0		do	Recommended to establish a buffer zone and corridors and release land belong to the village. Requested from DWLC to carry out a field investigation
		Buddangala	33.3		do	do
	Mahaoya	Maduruoya – Bogamuyaya Omunugala	16687.6		Used for grazing illegally (Bogamuyaya)	Advised to take legal actions
					There is a conflict between WLCD and Department of Archeology (Omunugala)	
	Damana	Kalugolla Dewalahinda Wadinagala	5616.3			
	Dehiaththakandiya	Kadirapura	12002.5			
	Lahugala	Lahugala Peranilahugala Pansalgoda Dewalagoda Hulannuge	33178.2			
	Padiyathalawa	Gal-Ode	8067.1			
	Pottuvil		256.7			
Sammanthurai	Valathapitiya Malkampitiya Malwaththa	50.8				

Annex V - Table 1.Type of presently protected areas, their location, approximate extent, managing agency and the available issues.

Type	D.S. Division	GN/village	Extent (ha)	Managing Agency	Issues identified in the protected area	Remarks
Wild life Reserve	Thirukkovil	Sagama Kanchikuduaru Thandiyadi Thangavelayudapuram	992.6	DWLC		
Coastal Reserve	Addalaichenai	Oluvil 1,4,6,7 Addalachchenai 6,7,8 Palamunai 1,2	53.8	CCD	Coastal Erosion is severe	Discussions with CCD revealed that actions will be taken by CCD to minimize the erosion.
	Nintavur	Ninthavur, 1	47.2		do	do
	Kalmunai	Kalmunai 1D,12B,1B, 02-14, Maruthamunai03,04,05,PeriyaniIavanai02	54.6		do	do
	Akkaraipattu	AKP Town 5,3 AKP1,11,13,14	23.8			
	Alayadiwembu		14.4			
	Karathivu	Maliyakadu East Karathivu 3,4,8,9	21.1			
	Lahugala		383.4			
	Pottuvil	Pottuvil 1 SinnaUllai Pasanichchanai Sangamamkanda Komari 1 Komari 2 KanagarGramam Rasakmoulana Nagar Sinnapudukudiiiruppu Unit 3	183.6			
	Sainthamaruthu	Saithamaruthu 2,4,6,8,10,12,13,15,17	2.5			
	Thirukkovil		220.9			

Annex V - Table 1.Type of presently protected areas, their location, approximate extent, managing agency and the available issues.

Type	D.S. Division	GN/village	Location	Extent (ha)	Coordinate	Managing Agency	Issues identified in the protected area	Remarks	
Archeological sites	Addalachchenai	Deegawapie 01		3.8	311367;231248	Dept. of Archeology			
		Deegawapie 01		2.4	311887;231436				
		Deegawapie 01		0.3	310560;230610				
		Oluvil 01		2.2	314582;231730				
		Oluvil 01		52.8	316170;230989				
		Palamuna 05	MulliMalai	13.2	318637;229911				
		Palamuna 05	VedenMalai	0.3	316837;229998				
	Alayadiwembu	Aligambai			309668;218010				
		Aligambai			311096;217318				
		Aligambai			314037;216349				
		Aligambai	Weheragalasite		307880;216530				
		Kannakikiramam 02	Muruhankovil - Kannhikiramam 02	5.5	314483;220219				
	Ampara		Near AlioluwatankAmbamalthalawa site		0.5				287952;227487
		Ambamalthalawa							
		Dambethalawa	Kadurugoda	4.3	285201;232365				

Annex V - Table 1.Type of presently protected areas, their location, approximate extent, managing agency and the available issues.

Type	D.S. Division	GN/village	Location	Approximate Extent (ha)	Coordinate	Managing Agency	Issues identified in the protected area	Remarks
Archeological sites	Ampara	Kotavehera	KotaveheraGovikandaura Archaeological Site	1.1	295217;230004	Dept. of Archeology		
		Mihindupura	Udayapura Tem Lipiya	0.3	301673;232505			
		Polwagajanapadaya	Owagiriya Archaeological site	25.9	287756;224575			
		Paragahakele East	Pansalgala 4 Sites)		307523;184993			
		Wavinna South	Dematagoda Archaeological Place - Wavinna	2.3	290971;226581			
			Gewal 7	1.00	289386;226055			
		Samapura	Hardy Qurtas	0.4	299245;232167			
		Samapura	Amparapillaiyarkovil	0.4	299119;231965			
		Samapura		0.0	266128;260033			
		Jayawardhanapura	Saddhathissa vid	0.6	300292;233313			
		Samapura		0.0	266128;260033			
Jayawardhanapura	Saddhathissa vid	0.6	300292;233313					

Annex V - Table 1.Type of presently protected areas, their location, approximate extent, managing agency and the available issues.

Type	D.S. Division	GN/village	Location	Extent (ha)	Coordinate	Managing Agency	Issues identified in the protected area	Remarks
Archeological sites	Damana	Thottama	Kukuluwaramaya	0.39	302671;215385	Dept. of Archeology		
		Madawalalanda	Mattayagalasite	1.15	299256;221669			
		Weheragala	Weheragalarock	5.74	307758;216633			
		Muwangala	Muwangalarock pillars	3.73	298334;229031			
		Peranigama	Ilukpitiya temple- Peranigama	2.86	298338;223482			
		Eggaloya	Eggaloya Ar. place	2.34	292390;219773			
		Kethsirigama	Kethsirigama-Mihiduarannya	0.95	291439;220872			
		Galkanda	Galkandacave	18.22	290760;220454			
		Bakmitiyawa	Mirahala		297729;204229			
		Ambalanoya	PokunugalaRajamahaViharaya	7.11	299898;219094			
		Muwangala	MuwangalaRajamahaViharaya	2.59	297522;228838			
Pallanoya	PannathgodaRajamahaVihara	0.04	286434;217193					

Annex V - Table 1.Type of presently protected areas, their location, approximate extent, managing agency and the available issues.

Type	D.S. Division	GN/village	Location	Extent (ha)	Coordinate	Managing Agency	Issues identified in the protected area	Remarks
Archeological sites	Damana	Wadinagala	Wadinagala 15 kanuwa	20.91	289560;211508	Dept. of Archeology		
		Pannalgama	Ruwanmaluwaarannya - pannalgama	1.05	297459;209839			
		Thimbirigolla		1.86	262531;260845			
		Thottama	Ariyakara Temple-Thottama	1.57	301203;212041			
		Pannalgama	Pannalgamagalkulunu	5.06	301140;213233			
		Keenawaththa	Kotawehera Archaeological Site	0.99	297223;225297			
	Dehiattakandiya	Dehiattakandiya		3.49				
		Dehiattakandiya		0.29				
		Ihalagama		0.01				
		Rideela		1.01				
		Rideela		0.8				
		Sadamadulla		21.71				
		Selasumgama		1.12				
		Serupitiya		0.85				
	Eragama	Irakkamam 05	NiwgunaRajamahaVihara	5.59	302866;225465			
		Irakkamam 05	YashodaraUpasikaramaya	2.00	303660;224672			
		Irakkamam 07	Awalayankondi Rock		308974;231045			
		Irakkamam 07	Malayadi Rock	2.00	304859;228862			
		Irakkamam 07	Manikkamadu		307563;229802			

Annex V - Table 1.Type of presently protected areas, their location, approximate extent, managing agency and the available issues.

Type	D.S. Division	GN/village	Location	Extent (ha)	Coordinate	Managing Agency	Issues identified in the protected area	Remarks
Archeological sites	Lahugala	Dewalagoda		0.52	305452;185853	Dept. of Archeology		
		Hulannuge		44.37	297358;192534			
		Hulannuge		4.91	297561;192310			
		Hulannuge West		0.09	296340;187911			
		Hulannuge West		34.77	296844;192764			
		Hulannuge West		0.42	296985;190666			
		Panama South	Sanyasamalai Temple	3.49	312332;170071			
		Panama South		93.65	304720;162789			
		Panama West		36.94	31137;178961			
		Pansalgoda		2.05	306495;182928			
		Pansalgoda		2.05	308712;190502			
		PeraniLahugala		0.36	304370;185354			
		PP09		0.34	305502;185363			
Shasthrawela		0.69	315720;175592					

Annex V - Table 1.Type of presently protected areas, their location, approximate extent, managing agency and the available issues.

Type	D.S. Division	GN/village	Location	Extent (ha)	Coordinate	Managing Agency	Issues identified in the protected area	Remarks
Archeological sites	Mahaoya	Pollebedda	Gal puwaruwa	18.32	268219;252,444	Dept. of Archeology		
			Watawalakandiya	01	269640;249459			
			HingeremadaRajamahaViharaya	02	269546;251045			
			Malgahaussa					
			Nuwaragala	07				
		Kelawinna	AluthArapotha	01	70530;81.37.887			
		Mahaoya	BollegamaRajamahaViharaya					
			Mahaoya Old Tank	0.25	7.449.90;81.32.33			
		Kekirihena	Perani Linda		7.50.53;81.33.32			
			PansalKele	01	7.53.50;81.31.81			
		Kudahasgala	EllegodaDewalekele		251000;261200			
			HarasgalaRajamahaViharaya		7.46.57;81.32.88			
	AthurugiriyaRajamahaViharaya		7.48.53;81.33.73					
	Lahugala	Mudagalakanda	01.00					

Annex V - Table 1. Type of presently protected areas, their location, approximate extent, managing agency and the available issues.

Type	D.S. Division	GN/village	Location	Extent (ha)	Coordinate	Managing Agency	Issues identified in the protected area	Remarks
Archeological sites	Mahaoya	Iddapola	Meewagalakanda	2.00	7.51.23;81.28.88	Dept. of Archeology		
			WilathalawaYaboramandiya	0.2	7.50.54;81.27.97			
			Kolongammegodagalthalawa	1.5	7.55.42;81.27.97			
		Unuwathurabubula	WeheragalaSenasanaya	07	7.77.79;81.35.44			
			ThissaPuranaRajamahaVihara	03	7.57.57;81.35.05			
			WeeranthalawaweheraGodella	01	7.39.02;81.79.29			
			Weeranthalawa	01	7.56.81;81.34.41			
		Bogamuyaya	Henannegala	04	7.57.57;81.28.56			
			Omunugala	04	7.58.60;81.36.56			
			Mattagala	03	7.49.90;81.32.33			
			Bogamuyaya Tank	01	7.57.53;81.28.40			
		Borapola	Akulloba	0.2	7.50.11;81.28.75			
Aranthalawa	AranthalawaNatabunGodella	1.5	7.60.65;81.42.70					
Tempitiya	TempitiyaRajamahaViharaya	08						

Annex V - Table 1.Type of presently protected areas, their location, approximate extent, managing agency and the available issues.

Type	D.S. Division	GN/village	Location	Extent (ha)	Coordinate	Managing Agency	Issues identified in the protected area	Remarks	
Archeological sites	MahaOya	TempitiyaWewa		0.5		Dept. of Archeology			
		Kudalakatuwa		03	7.60.08 81.41.85				
		Niyadawaragala		03	7.62.90 81.45.54				
	Padiyathalawa	Komana	Lunubokka		2.11				261335;239414
			LunubokkaWewa						261340;240034
			Viharapadavikanda						
		Thalapitaoya Left	PadiyadoraRajamahaVihara		4.17				245312;256066
		Dorakumbura	Wahawa		01				259033;339687
		Holike	Temple		03				
		Serankada	Temple		02				250131;255636
		Thalapitaoya South	Weheregoda		0.2				242811;254488
		Unapana	Nawinna Temple		1.5				247403;252453
		Moradeniya	Miriwellanda						
		Saranagama	Yaboramandiya		0.2				246061;255397
		Hagamwela	Kokagala Kanda		01				246004;248885
	Kataram Len								
Pulungasmulla	Mahathalawa		0.48	251904;254382					

Annex V - Table 1.Type of presently protected areas, their location, approximate extent, managing agency and the available issues.

Type	D.S. Division	GN/village	Location	Extent (ha)	Coordinate	Managing Agency	Issues identified in the protected area	Remarks
Archeological sites	Pothuvil	Jalaldeen Square		6.12	317,274;184,952	Dept. of Archeology		
		Pothuvil 01 Unit 3		0	317,403;185,622			
		SinnaPuthukkudiyiruppu		1.18	318,028 219,886			
	Thirukkovil	Thandiyadi		0.03	318,381 204,235			
		Vinayagapuram 3		0.13	319,778 207,849			
		Bakkiella	Girikumbilaviharaya-Bakki Ella	1.17	296,918 252,360			
	Uhana	Lathugala	Perawelpitiya		7 23 22 81 32 37			
		Rajagalathenna North	Rajagala Archaeological Site	6.34	292,960 254,474			
		Bandaradoowa	Samangala Archaeological Site	13.77	288,861 245,453			
		Buddhangala	Buddangala	37.43	302,763 236,688			
		Bridge Camp	SamanaBadda Archaeological	0.63	296,641 237,833			
		Gonagolla	Sri Gothama temple	8.68	293,237 248,486			
		Kahatagasyaya	Nella	20.65	284,044 235,320			
		Kothmale	PunchiSeegiriya					
		Mayadunna	Sri Dharmendararamaya Archaeological Site	0.67	295,530 246,629			
		Bokkebedda	UthurupawwaRajamahaViharaya		294780 242372			
Piyangala	Piyangala Archaeological	11.57	294,893 254,973					

Annex V - Table 1.Type of presently protected areas, their location, approximate extent, managing agency and the available issues.

Type	D.S. Division	GN/village	Location	Extent (ha)	Coordinate	Managing Agency	Issues identified in the protected area	Remarks
Archeological sites	Uhana	Udagirigama East	Udayagiri Raja mahaviharai	0.45	294,152 242,828	Dept. of Archeology		
		Weeragoda North	Sri vajira Rama ViharayaArcheological site	0.87	302,413 241,174			
		Bandaradoowa		196.15	258,419 263,029			

Annex V - Table 2: Additional areas that need to be protected in the district.

Type	DS Division	Location	Approx. Extent ha)	Recommendations	Responsible agency	Remarks
Archeologically significant sites	Mahaoya	Bogamuyaya	1.1	Protection of these sites is recommended.	Department of Archeology	
		Borapola	0.3			
		Iddapola	0.1			
		Kekirihenna	0.2			
		Kudaharasgala	1			
		Mahaoya	0.1			
	Padiyatalawa	Galodai	0.1	do		
		Komana	2.1			
		Serankada	0.3			
		Dorakumbura	0.1			
	Thirukkovil	Sagamam	1.2	do		
	Potuvil	Kannagarkiramam	0.1	do		
		Hjra Nagar	0.1			
		Inspector Eatham	0.1			
		Komari O2	1.1			
		Pasaraichchenai	0.2			
		Sangamankandy	0.1			
		Vaddively	0.1			
	Ampara	Wavinna South	0.7	do		
	Uhana	Bandaraduwa	0.1	do		
Galahitiyagoda		1.8	do			
Gonagolla		0.6				
Kahatagasyaya		1.2				
Kumarigama		0.1				
Udayapura		0.2				
Sammanthurai	Valathapitiy (Palaveli), Malkampitiya	8.0				
Kalmunai	Pandirippu 2	1.0				
						Partly has been encroached for housing

Annex V - Table 2: Additional areas that need to be protected in the district.

Type	DS Division	Location/Coordinates	Approx. Extent (ha)	Recommendations	Responsible Agency
Wet Lands	Alayadiwembu	Akkaraipattu 8	0.06	Protection of these sites is recommended.	Central Environmental Authority (CEA)
		Akkaraipattu 9	10.2		
		Alayadivembu	82.9		
		Kannakiramam 01	148.9		
		Kolavil 02	1.8		
		Kolavil 03	0.1		
		Panankadu	15.8		
		SinnaPanankadu	63.6		
		Sinnamugathuwaram	7.6		
		Vachchikuda	7.8		
		Aligambai	3.3		
	Akkaraipattu	Alim Nagar	2	do	
		Karunkoditivu 06	3.7		
		Karunkoditivu 14	1.4		
		Paddyadippiddy	13.6		
	Navithanveli	Annamalai 01	0.5	do	
		Annamalai 02	31.7		
		Annamalai 03	2.2		
	Addalachchenai	Addalachchenai 08	0.02	do	
		Addalachchenai 09	0.07		
		Addalachchenai 10	3.91		
		Addalachchenai 16	0.02		
		Deegawapie 01	2.1		
Deegawapie 02		0.5			
Oluvil 01		1.4			
Oluvil 04		2.5			

Annex V - Table 2: Additional areas that need to be protected in the district.

Type	DS Division	Location/Coordinates	Approx. Extent (ha)	Recommendations	Responsible Agency
Wet Lands	Ampara	Kotavehera	1.7	Protection of these sites is recommended.	CEA
	Dehiattakandiya	Rideela	9.4		
	Kalmunai	Natpiddymunai 02	0.2		
		Senaikudiyiruppu 01	0.1		
	Mahaoya	Tempitiya	1.3		
		UnuwathuraBubula	4.6		
	Navithanveli	Annamalai 01	0.5		
		Annamalai 02	31.7		
		Annamalai 03	2.2		
		Chalambaikerny 02	93.8		
		Chavalakade	4.4		
		Navithanveli 01	12.2		
		Navithanveli 02	0.3		
	Ninthavur	Sorikalmunai 1	15.1		
		Ninthavur 01	1.1		
		Ninthavur 10	44.2		
	Padiyathalawa	Ninthavur 23	0.1		
		Hagamwela	1.4		
	Pothuvil	Canaharkiramam	35.6		
		Hidayapuram 1	2.1		
		Hijra Nagar	73.8		
		Inspector Etham	6.9		
		Kalappukaddu	191.9		
Komarie 02		85.2			
Kundumadu		56.9			
Pakkiyawatta 1		6.5			
Pakkiyawatta 2		57.1			
Passarichchenai		14.1			
RasakMoulana Nagar	149.9				

Annex V - Table 2: Additional areas that need to be protected in the district.

Type	DS Division	Location/Coordinates	Extent (ha)	Recommendations	Responsible Agency
Wet Lands		SinnaUllai	0.1	Protection of these sites is recommended.	CEA
		Vaddively	33.7		
		Victor Estate 1	0.7		
		Victor Estate 2	5.5		
	Sammanthurai	Malkampiddy	0.1		
		Malwatte 01	0.2		
		Valathapitty 01	0.7		
		Valathapitty 02	0.9		
		Veeramunai 01	82.8		
		Veeramunai 02	0.4		
	Thirukkovil	Veeramunai 04	1		
		Kanchikudicharu	10.1		
		Kanchirankuda	0.7		
		Sangamam	4.4		
		Sangamangramam	52.3		
		Thambaddai 1	21.9		
		Thambaddai 2	9.3		
		Thambiluvil 1 East	2.7		
		Thambiluvil 1 South	31		
		Thambiluvil 1 West	20.2		
		Thambiluvil 2 West	29.4		
		Thandiyadi	13.5		
		Thirukkovil 2	0.1		
		Thirukkovil 3	27.7		
Thirukkovil 4	5.6				
Vinayagapuram 1	0.9				
Vinayagapuram 3	112.9				
Vinayagapuram 4	45.6				

Annex V - Table 2: Additional areas that need to be protected in the district.

Type	DS Division	Location/Coordinates	Extent (ha)	Recommendations	Responsible Agency
Wet Lands	Uhana	Abhayapura	5.7	Protection of these sites is recommended.	CEA
		Bakkiella	0.3		
		Bandaradoowa	46.3		
		Bokkabedda	1.9		
		Dadayanthalawa East	0.5		
		Dadayanthalawa West	5.8		
		Dematamalpelessa	0.3		
		Gonagolla	2		
		Himidurawa	1.2		
		Kahatagasyaya	10.8		
		Kohombana	0.3		
		Kumudugama	1.4		
		Mahakandiya	0.6		
		Nawagiriya	5		
		Nugelanda North	0.1		
		Piyangala	0.1		
		Rajagalathenna North	0.4		
		Rajagalathenna South	1.7		
		Sandanadapura	0.1		
		Senagama North	0.7		
Udagirigama East	0.3				
Udagirigama West	1.2				
Udayapura	2.1				
Verenketagoda	1.8				
Sand Dunes	Lahugala	Panama South & North			
Forest	Addalachchanai	Deegawapi 2			
	Karathivu	Karathivu 8,9			

Annex V- Table 3: Underutilized Home gardens their total extent, reasons for underutilization and general recommendations for the improvement

DS Division	Total Extent (ha)	Reasons for underutilization	Recommendations	Responsible Agency	Remarks
-------------	-------------------	------------------------------	-----------------	--------------------	---------

Addalachchenai	232	(a) Unavailability of water (b) Damage of crops from wild animals (c) Inadequate Technical know-how (d) Presence of degraded lands/areas (e) Lack of capital	1. Recommended to carry out a study to see the possibility of use of ground water by agro-wells 2. Adaptation by introducing drought tolerant crops. 3. Introduction of soil and water conservation techniques 4. Extension of the existing electric fence/establish a new fence. 5. Introduce conservation farming practices and provide necessary inputs including training. 6. Awareness creation on agric. loans/subsidy systems.	WRDB PDOA DWLC CCB	Reasons for underutilization and their impact vary with one land to another. Inadequate technical know-how is particularly refers to conservation farming. Extension of the electric fence was suggested by stakeholders. Extraction of ground water by agro-wells is possible only in some home gardens. However, tapping of deep aquifer by deep wells could be another option.
Akkaraipattu	167	(a) Lack of capital (b) Inadequate technical know-how (c) Presence of degraded lands/areas		PDOA CCB	

Annex V- Table 3: Underutilized Home gardens their total extent, reasons for underutilization and general recommendations for the improvement

DS Division	Total Extent (ha)	Reasons for underutilization	Recommendations	Responsible Agency	Remarks
Alayadiwembu	187	(a) Lack of capital (b) Inadequate technical know-how (c) Presence of degraded lands/areas	<ol style="list-style-type: none"> 1. Recommended to carry out a study to see the possibility of use of ground water by agro-wells 2. Adaptation for the drought by introducing drought tolerant crops. 3. Introduction of soil and water conservation techniques 4. Extension of the existing electric fence/establish a new fence 5. Introduce conservation farming practices and provide necessary inputs including training. 6. Awareness creation on agric. loans/subsidy systems 	PDOA CCB	
Ampara	2812	<ol style="list-style-type: none"> 1. Unavailability of water 2. Damage of crops from wild animals 3. Inadequate technical know-how 4. Lack of capital 		WRDB DWLC PDOA CCB	Adaptation by introducing drought tolerant crops could be one of the alternatives for the water scarcity issue. This could be practiced in home gardens where the water is inadequate.
Damana	4988	<ol style="list-style-type: none"> 1. Unavailability of water 2. Damage of crops from wild animals 3. Inadequate technical know-how 5. Lack of capital 		WRDB DWLC PDOA CCB	
Dehiattakandiya	5448	<ol style="list-style-type: none"> 1. Damage of crops from wild animals 3. Inadequate technical know-how 5. Lack of capital 		DWLC PDOA CCB	

Annex V- Table 3: Underutilized Home gardens their total extent, reasons for underutilization and general recommendations for the improvement (cont...)

DS Division	Total Extent (ha)	Reasons for underutilization	Recommendations	Responsible Agency	Remarks
Lahugala	138	<ol style="list-style-type: none"> 1. Unavailability of water 2. Inadequate technical know-how 3. Lack of capital 	<ol style="list-style-type: none"> 1. Recommended to carry out a study to see the possibility of use of ground water by agrowells 	<p>DWLC PDOA CCB</p>	
Irrakkamam	407	<ol style="list-style-type: none"> 1. Unavailability of water 3. Inadequate technical know-how 4. Presence of degraded lands/areas 5. Lack of capital 	<ol style="list-style-type: none"> 2. Adaptation for the drought by introducing drought tolerant crops. 3. Introduction of soil and water conservation techniques 4. Extension of the existing electric fence/establish a new fence. 	<p>WRDB DWLC PDOA CCB</p>	
Kalmunai	87	<ol style="list-style-type: none"> 5. Lack of capital 3. Inadequate technical know-how 	<ol style="list-style-type: none"> 5. Introduce conservation farming practices and provide necessary inputs including training. 	<p>PDOA CCB</p>	
Mahaoya	6714	<ol style="list-style-type: none"> 1. Unavailability of water 2. Damage of crops by Wild animals 3. Inadequate technical know-how 4. Presence of degraded lands 5. Lack of capital 	<ol style="list-style-type: none"> 6. Awareness creation on agric. loans/subsidy systems 	<p>WRDB DWLC PDOA CCB</p>	

Annex V- Table 3: Underutilized Home gardens their total extent, reasons for underutilization and general recommendations for the improvement (cont...)

DS Division	Total Extent (ha)	Reasons for underutilization	Recommendations	Responsible Agency	Remarks
Navithaveli	810	1. Unavailability of water 2. Inadequate technical know-how 3. Lack of capital	1. Recommended to carry out a study to see the possibility of use of ground water by agrowells	WRDB PDOA CCB	
Ninthavur	90	1. Inadequate technical know-how 2. Lack of capital	2. Adaptation for the drought by introducing drought tolerant crops.	PDOA CCB	
Padiyathalawa	4962	1. Damage of crops by Wild animals 2. Inadequate technical know-how 3. Lack of capital	3. Introduction of soil and water conservation techniques 4. Extension of the existing electric fence/establish a new fence. 5. Introduce conservation farming practices and provide necessary inputs including training. 6. Awareness creation on agric. loans/subsidy systems.	DWLC WRDB PDOA CCB	

Annex V- Table 3: Underutilized Home gardens their total extent, reasons for underutilization and general recommendations for the improvement (cont...)

DS Division	Total Extent (ha)	Reasons for underutilization	Recommendations	Responsible Agency	Remarks
Pothuvil	346	<ol style="list-style-type: none"> 1. Unavailability of water 2. Damage of crops by Wild animals 3. Inadequate technical know-how 5. Lack of capital 	<ol style="list-style-type: none"> 1. Recommended to carry out a study to see the possibility of use of ground water by agro-wells 2. Extension of the existing electric fence 3. Introduction of soil and water conservation techniques. 5. Awareness creation on agric. loans/subsidy systems. 	<p>DWLC WRDB PDOA CCB</p>	
Sainthamarathu	0.2	<ol style="list-style-type: none"> 1. Lack of capital 	<ol style="list-style-type: none"> 1. Awareness creation on agric. loans/subsidy systems. 	<p>PDOA CCB</p>	
Samanthurai	817	<ol style="list-style-type: none"> 1. Unavailability of water 2. Inadequate technical know-how 3. Presence of degraded lands 4. Lack of capital 	<ol style="list-style-type: none"> 1. Recommended to carry out a study to see the possibility of use of ground water by agro-wells 2. Introduction of soil and water conservation techniques. 3. Introduce conservation farming practices and provide necessary inputs including training. 4. Awareness creation on agric. loans/subsidy systems. 	<p>DWLC WRDB PDOA CCB</p>	

Annex V- Table 3: Underutilized Home gardens their total extent, reasons for underutilization and general recommendations for the improvement (cont...)

DS Division	Total Extent (ha)	Reasons for underutilization	Recommendations	Responsible Agency	Remarks
Thirukkovil	231	<ol style="list-style-type: none"> 1. Unavailability of water 2. Damage of crops by Wild animals 3. Inadequate technical know-how 4. Presence of degraded lands 5. Lack of capital 	<ol style="list-style-type: none"> 1. Recommended to carry out a study to see the possibility of use of ground water by agro-wells 2. Extension of the existing electric fence 3. Introduction of soil and water conservation techniques. 4. Provide training 5. Awareness creation on agric. loans/subsidy systems. 	<p>DWLC WRDB PDOA CCB</p>	
Uhana	6718	<ol style="list-style-type: none"> 1. Unavailability of water 2. Damage of crops by Wild animals 3. Inadequate technical know-how 4. Presence of degraded lands 5. Lack of capital 	<ol style="list-style-type: none"> 1. Recommended to carry out a study to see the possibility of use of ground water by agro-wells 2. Extension of the existing electric fence 3. Introduction of soil and water conservation techniques. 5. Awareness creation on agric. loans/subsidy systems. 	<p>DWLC WRDB PDOA CCB</p>	

Annex V- Table 4: Details of abandoned settlements

DS Division	Name of the village/settlement	No. of families abandoned their lands	Approx. extent (ha)	Reason for the abandonment	Abandoned period	Present use/present land cover	Recommendations
Alayadiwembu	Sinnamugathuwaram		7.5				
Mahaoya	PeraweltalawaBeragala, Arapotha, Bedirakka, Kolabana, Bogamuyaya Rathupasuhana, Kohombayaya	83	144.6	Conflict situation	30 years	Forest	Negotiations are needed with relevant authorities to resolve the issue
Pothuvil	Urani Komarie 02	23	109.3		30 years	Forest	
Navithanveli	Central camp 01, Central Camp 04, Chawalakada, Annamalai 02 Chalambaikerny 01 Sorikalmunai 3	62	13.3		10 years	Forest	As these areas comes under the purview of the DWLC, resettlement is not possible.
Thirukkovil	Thankavelauthapuram, Kanchkudichcharu	45	31.6		30 years	Forest	
Uhana	Gonagala, WeheragamaEast, Galapitagala East, Suhadagama South, Bandaraduwa, Bakkiella, Rajagama, Piyangala	143	81.9		31 years	Forest	



Annex VI - Criteria used to determine the Land Suitability for different uses

1. The Factors that were considered to assess the lands for Agriculture

Parameter	Level -1	Level -2	Level -3	Level -4
1. Slope	0-30%	30-40%	40-60%	>60 %
2. Soil depth	Very deep > 120 cm	Deep (120 – 60) cm	Moderately deep (60 – 30) cm	Shallow < 30cm
3. Soil erosion hazard	Nil	Slight	Moderate	High
4. Soil texture	Loam	Sandy loam	Sand	Sand with stones
5. Drainage	Well drained	Moderately well Drained	Manageable	Poorly Drained
6. Rockiness	Nil	Few	Significant	High
7. Water availability for cultivation	Water sources available within the land	Sources available close to the land	Sources available within manageable distance	Difficult to obtain water supply
8. Road Accessibility	Available to the land	Available close to the land	Available within manageable distance	Difficult to get

Based on the above parameters matrix, the land should be evaluated based for its suitability for

Agriculture under appropriate category as follows:

Symbol	Category	Parameters
S1	Highly Suitable	If 1-6 parameters are at level - 1, 7-8 parameters are at level - 3 or below
S2	Suitable	If 1-6 parameters are at level -2 or below and 7 -8 parameters at level -3 or below

S3	Moderately Suitable	If 1-8 parameters are at level -3 or below
N	Not suitable	If any of the parameters are at level -4

2. The Factors that were considered to assess the lands for Housing

Parameter	Level -1	Level -2	Level -3	Level -4
1. Water availability	Water sources available within the land	Sources available close to the land	Sources available within manageable distance	Difficult to obtain water supply
2. Electricity	Electricity available	Electricity about to be supplied	Possible to get electricity	Difficult to get electricity supply
3. Telephone	Facilities are available	Facilities about to be supplied	Only Mobile coverage available	No coverage area
4. Transport facilities	Transport available to the land	Available closer to the land	Not available but can be developed	Very difficult to obtain transport
5. Environmental impact	Not significant	Mild problem could be expected	Could be overcome by planning	Very sensitive environmental issues will arise
6. Social impact	Very slight	Slight	Moderate	High
7. Drainage	Manageable	Unmanageable		
8. Rockiness	Possible to construct building	Impossible to construct building		
9. Slope	<45%	> 45%		

Based on the above parameters matrix, the land should be evaluated based for its suitability for

Housing under appropriate category as follows:

Symbol	Category	Parameters
S1	Highly Suitable	If all (1-9) Parameters are at level -1

S2	Suitable	If 1-7 parameters are at level -2 or below and 8-9 parameters at level -1
S3	Moderately Suitable	If 1-7 parameters are at level -3 or below and 8-9 parameters at level -1
N	Not Suitable	If any of 1-7 parameters are at level -4 or any 8-9 at level -2

3. The Factors that were considered to assess the lands for Industry

Parameter	Level -1	Level -2	Level -3	Level -4
1. Water availability	Water sources available within the land	Sources available close to the land	Sources available within manageable distance	Difficult to obtain water supply
2. Electricity	3 phase electricity available	3 phase electricity about to be supplied	Possible to get electricity	Difficult to get electricity supply
3. Telephone	Facilities are available	Facilities about to be supplied	Only Mobile coverage available	No coverage area
4. Transport facilities	Transport available to the land	Available closer by area	Not available But can be developed	Very difficult to obtain transport
5. Environmental impact	Not significant	Mild problem could be expected	Problem could be expected, but Could be overcome by planning	Very sensitive environmental issues will arise
6. Population in surrounding area	Surrounding area is not populated	Surrounding area is slightly populated	Surrounding area is Moderately populated	Heavily populated
7. Availability of urban facilities for employees	Available within 1 Km	Available within 5 Km	Available within 15 Km	Available > 15 Km
8. Slope	<45%	> 45%		
9. Drainage	Manageable	Unsatisfactory		
10. Rockiness	Possible to construct building	Impossible to construct building		

Based on the above parameters matrix, the land should be evaluated based for its suitability for

Industry under appropriate category as follows:

Symbol	Category	Parameters
S1	Highly Suitable	If all (1-10) Parameters are at level -1
S2	Suitable	If 1-7 parameters are at level -2 or below and 8-10 parameters at level -1
S3	Moderately Suitable	If 1-7 parameters are at level -3 or below and 8-10 parameters at level -1
N	Not suitable	If any of 1-7 parameters are at level -4 or any 8-10 at level -2

4. Factors considered in assessing the lands for Tourism development

- 1) Quality of beach /Beauty of the View
- 2) Condition for Swimming
- 3) Condition for Surfing
- 4) Proximity to Historical or Archeological Sites
- 5) Availability of infrastructure facilities
- 6) Social acceptance
- 7) Possible Environmental impact (Low, Moderate, High)
- 8) Closeness to the natural habitats